



THE PARKLANDS

THE PARKLANDS OF JASPER, INDIANA





I want to welcome everyone to the INITIAL GENERAL DESIGN and the Projected Costs presentation of the Jasper Parklands.

In the second quarter of 2015 the Jasper Common Council initiated a request to the Jasper Park Board for planning out the design, construction, and costs of the 49.42 acre Jasper Parklands. The Jasper Common Council budgeted \$300,000 and to date the Parklands design has cost \$54,000.



OVERVIEW

1. Park Board President – Present Logistics and New Land Acquisition. ([Roger Seger and Ken Buck](#))
2. Design Team – Detailed Project Summary ([Hafer: Jeff Justice, Rundell: Pete Andriot](#))
3. Park Board President – Financial Overview ([Roger Seger and Ken Buck](#))
4. Dubois County Community Foundation – Detailed Financial Analysis – Grants, Private Funding, etc ([Brad Ward](#))
5. Questions and Answers
6. Park Board Motion



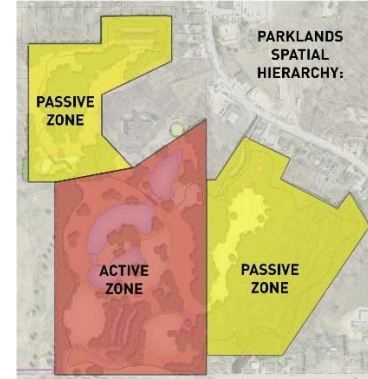
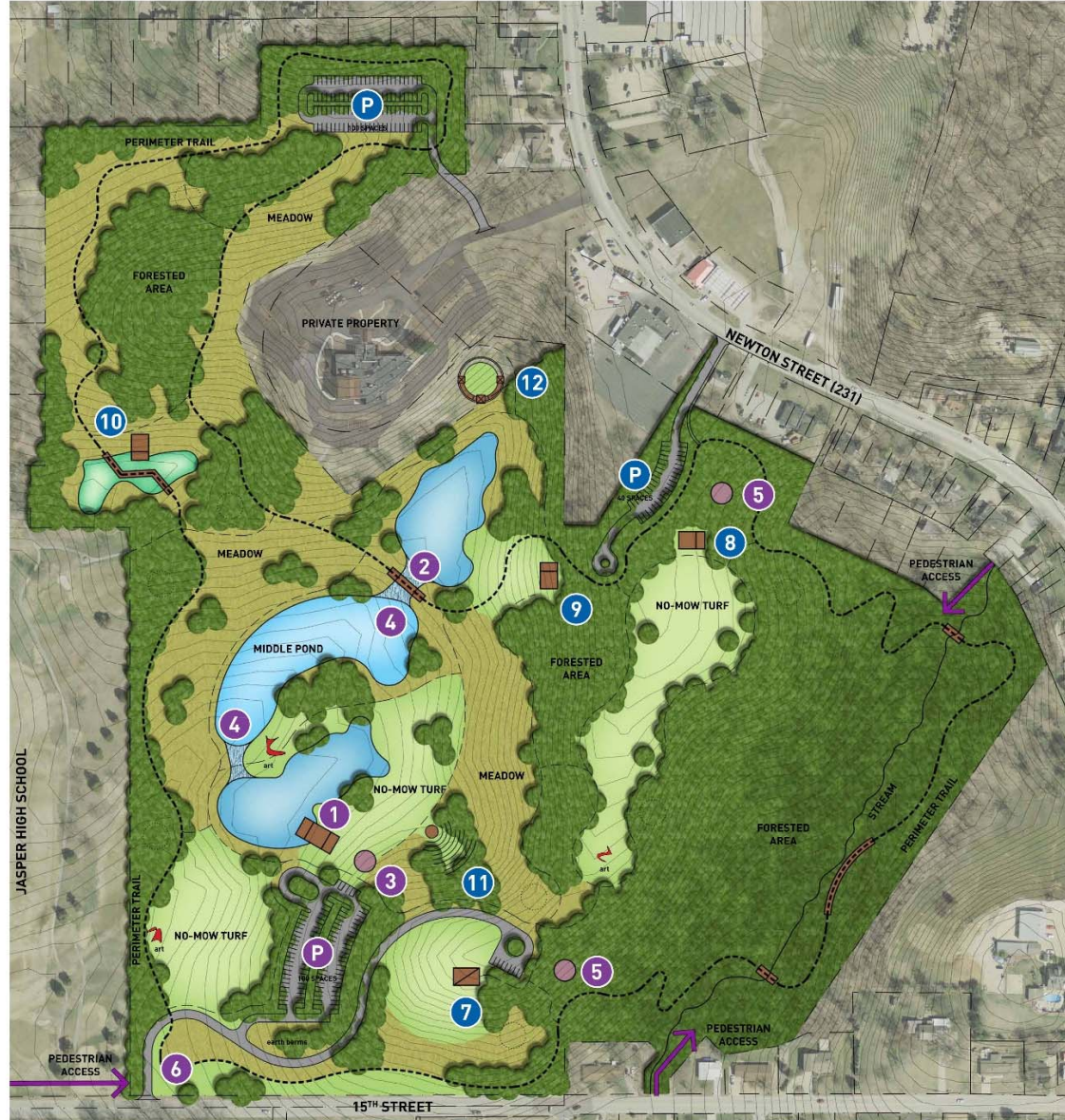
Logistics and New Land Acquisition

| | |
|----------------|------------------------------|
| Present Zones: | 30.79 Acres (Active) |
| | <u>18.63 Acres (Passive)</u> |
| Total | 49.42 Acres |

| | |
|-----------------------|-----------------------------------------------|
| New Land Acquisition: | 20.15 Acres (Passive) Gramelspacher, Nordhoff |
| | <u>5.50 Acres (Passive) Eversman</u> |
| Total | 25.65 Acres |

At this time I would like to announce the acquisition of 25.65 Acres of woodland (known as the Gramelspacher, Nordhoff, and Eversman Property) that will be donated to the City of Jasper. Because of generous private donations and Grants this wooded property will be included in the upcoming presentation. These 25.65 acres plus the remaining 49.42 acres will help Jasper create a 75.07 acre destination park that will be like no other in the state. Our goal was to create a unique nature park for all ages. Our target audience includes families, individuals, schools, youth groups, churches, etc.

These 25.65 acres will be protected woodland (Bicentennial Nature Trust) and will allow for initial variances for our park activities.



KEY FEATURES

Initial Project:

- 1 LAKESIDE PAVILION AND LAWN AREA
- 2 SIGNATURE FOOTBRIDGE
- 3 SPRAY PAD
- 4 CASCADES FALLING INTO MIDDLE POND
- 5 ADVENTURE PLAYGROUND
- 6 ENTRY SIGNAGE

Additionally:

All earthwork, grading, and drainage improvements; meadows, turf lawns, specimen trees, reforestation, and constructed wetlands throughout the property.

Future Projects:

- 7 HILL TOP SHELTER
- 8 FOREST RIDGE SHELTER
- 9 WOODS EDGE SHELTER
- 10 SCIENCE LAB AT CONSTRUCTED WETLAND
- 11 AMPHITHEATER
- 12 WEDDING GARDEN

P PARKING AREA

PERIMETER TRAIL: 2 MILE PAVED LOOP w/ BOARDWALKS & FITNESS STATIONS

INTERIOR TRAILS: CRUSHED STONE

P PARKING AREA

PICNIC AREAS

INTERIOR TRAILS: CRUSHED STONE

VIEW FROM 15TH STREET INTO PARKLANDS

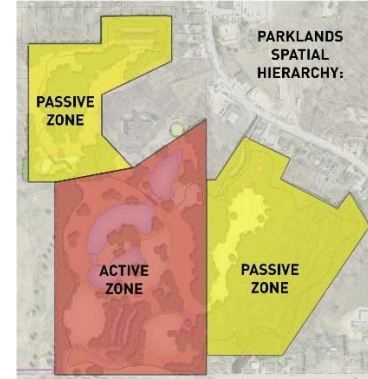
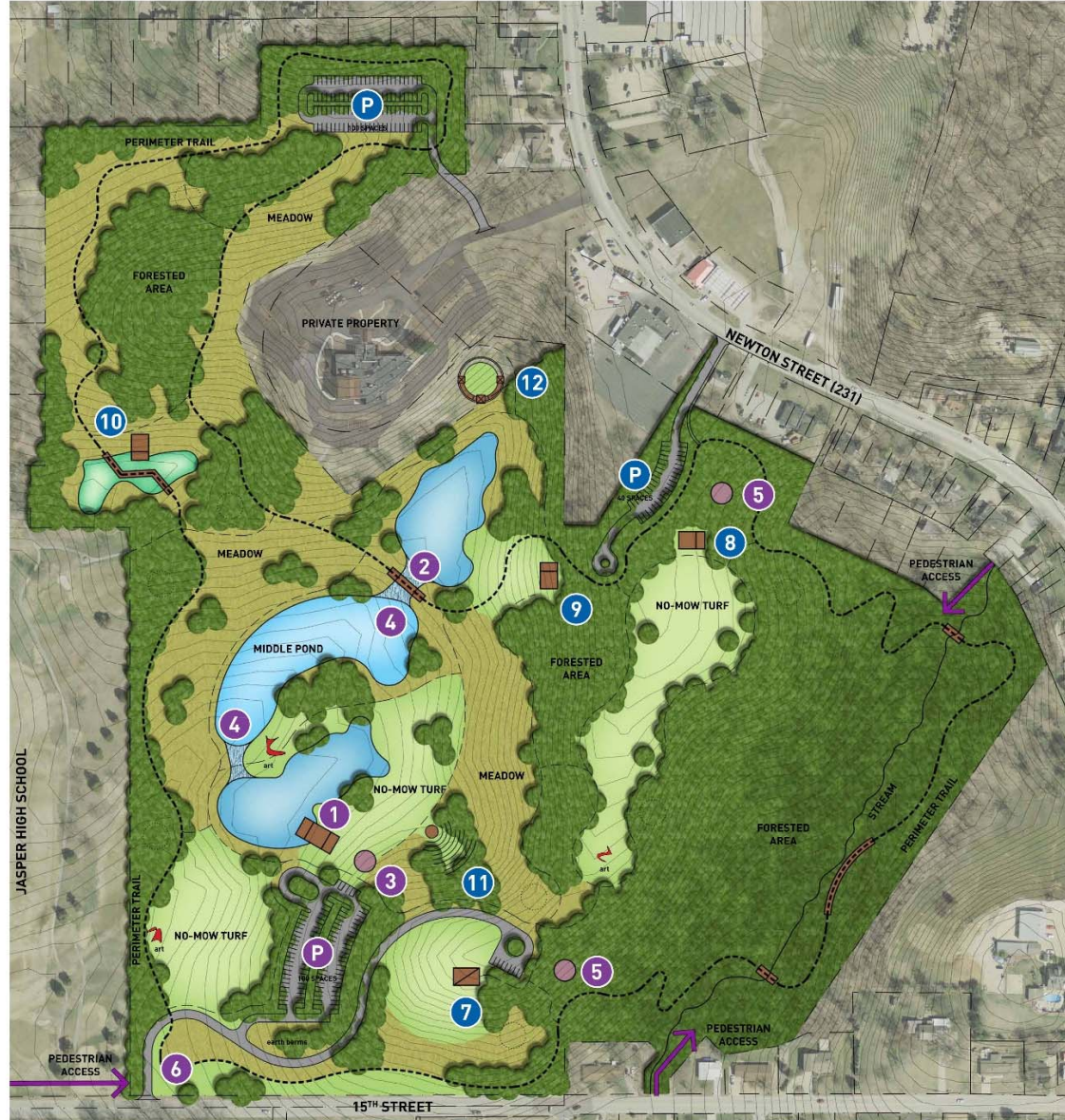


VIEW OF MIDDLE POND AND LAKESIDE PAVILION



VIEW OF MIDDLE POND AND SIGNATURE FOOTBRIDGE





KEY FEATURES

Initial Project:

- 1 LAKESIDE PAVILION AND LAWN AREA
- 2 SIGNATURE FOOTBRIDGE
- 3 SPRAY PAD
- 4 CASCADES FALLING INTO MIDDLE POND
- 5 ADVENTURE PLAYGROUND
- 6 ENTRY SIGNAGE

Additionally:

All earthwork, grading, and drainage improvements; meadows, turf lawns, specimen trees, reforestation, and constructed wetlands throughout the property.

Future Projects:

- 7 HILL TOP SHELTER
- 8 FOREST RIDGE SHELTER
- 9 WOODS EDGE SHELTER
- 10 SCIENCE LAB AT CONSTRUCTED WETLAND
- 11 AMPHITHEATER
- 12 WEDDING GARDEN

P PARKING AREA

PERIMETER TRAIL: 2 MILE PAVED LOOP w/ BOARDWALKS & FITNESS STATIONS

INTERIOR TRAILS: CRUSHED STONE

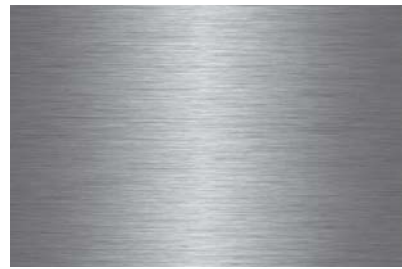
P PARKING AREA

PICNIC AREAS

INTERIOR TRAILS: CRUSHED STONE

INITIAL PROJECT

- FRAMEWORK FOR A DESTINATION PARK FOR
ALL AGES



LAKE SIDE PAVILION & SHELTERS



PRECEDENT IMAGE



PRECEDENT IMAGE



PRECEDENT IMAGE

SPRAY PAD



PRECEDENT IMAGE



PRECEDENT IMAGE



PRECEDENT IMAGE

SIGNATURE FOOTBRIDGE



PRECEDENT IMAGE



PRECEDENT IMAGE



PRECEDENT IMAGE

CASCADES BETWEEN PONDS



PRECEDENT IMAGE



PRECEDENT IMAGE



PRECEDENT IMAGE

ADVENTURE PLAY AREAS



PRECEDENT IMAGE



PRECEDENT IMAGES





PRECEDENT IMAGE

TRAILS AND BOARDWALKS



PRECEDENT IMAGE



PRECEDENT IMAGE



PRECEDENT IMAGE



PRECEDENT IMAGE

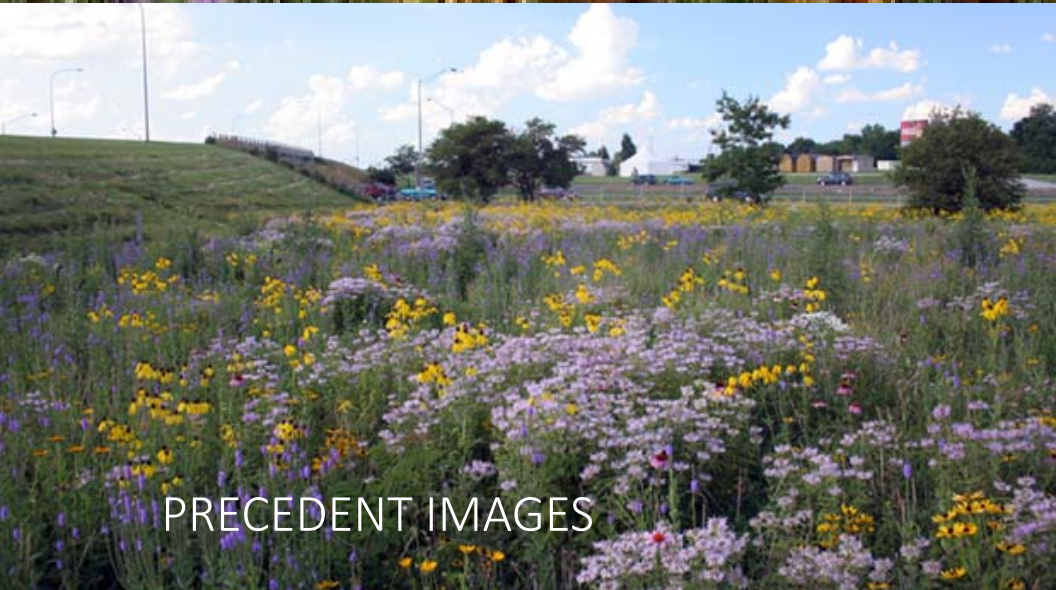
FITNESS STATIONS



PRECEDENT IMAGES



MEADOWS, WETLANDS, & TURF



PRECEDENT IMAGES



PRECEDENT IMAGES



PRECEDENT IMAGES

FUTURE PROJECTS

- BUILDING ON A SUCCESSFUL FRAMEWORK

ADDITIONAL SHELTERS

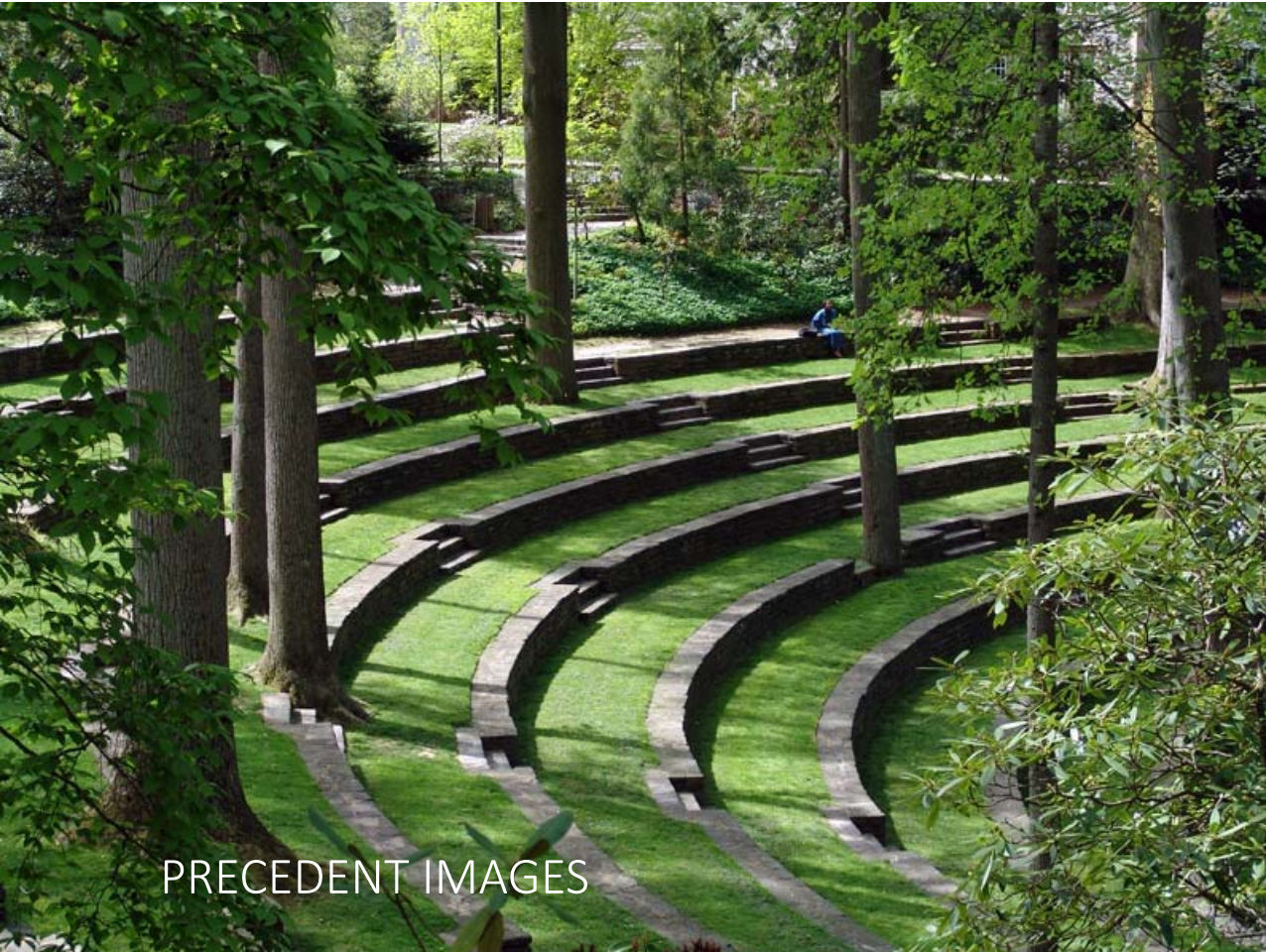


WEDDING GARDEN



PRECEDENT IMAGES

AMPHITHEATER



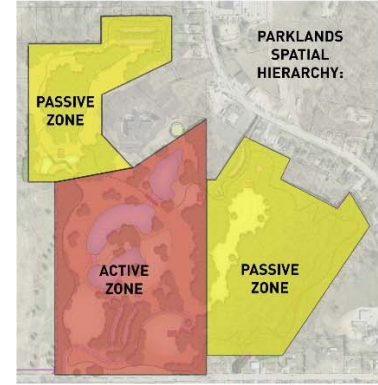
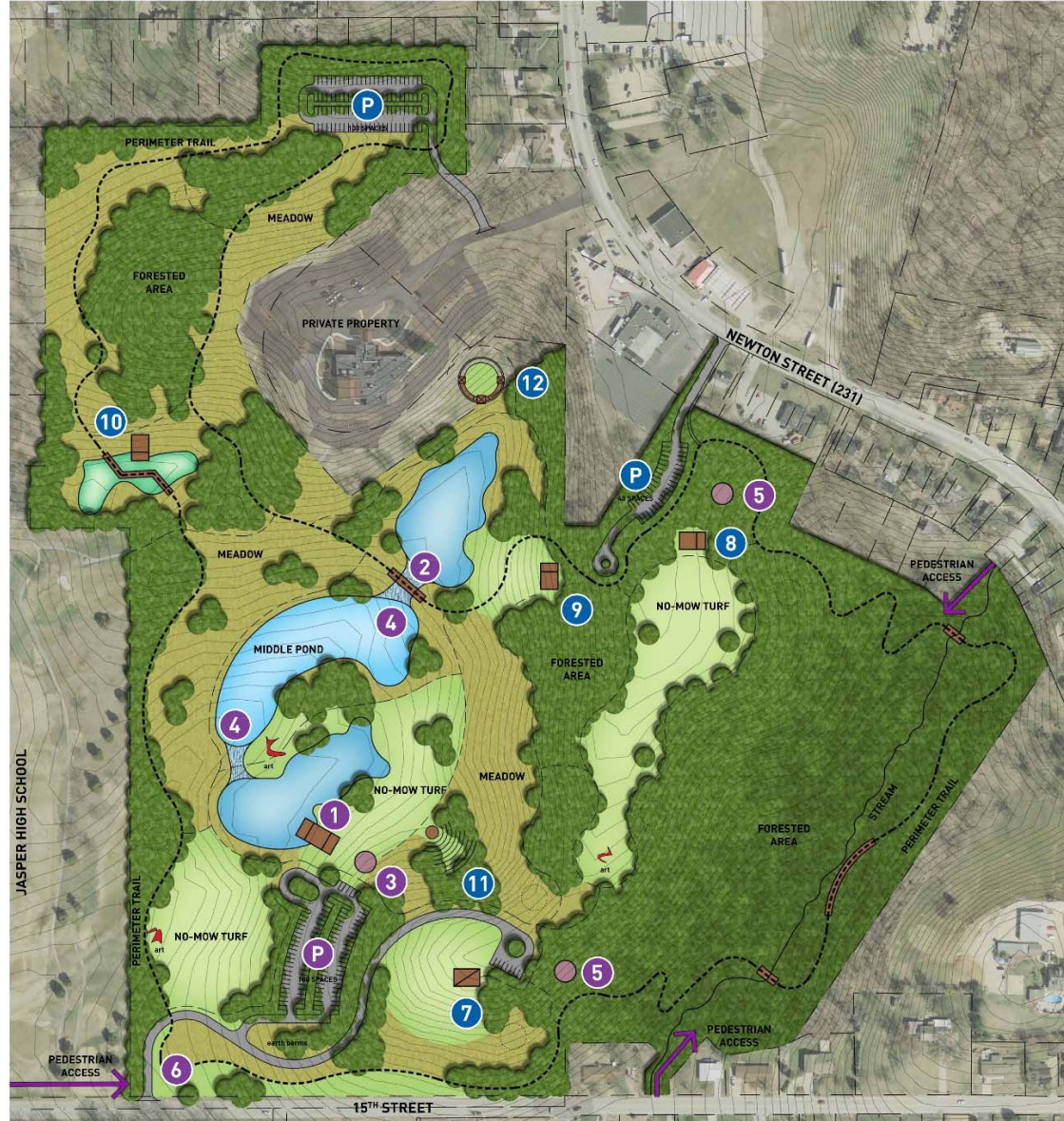
PRECEDENT IMAGES

ARTWORK



PRECEDENT IMAGE





KEY FEATURES

Initial Project:

- 1 LAKESIDE PAVILION AND LAWN AREA
- 2 SIGNATURE FOOTBRIDGE
- 3 SPRAY PAD
- 4 CASCADES FALLING INTO MIDDLE POND
- 5 ADVENTURE PLAYGROUND
- 6 ENTRY SIGNAGE

Additionally:

All earthwork, grading, and drainage improvements; meadows, turf lawns, specimen trees, reforestation, and constructed wetlands throughout the property.

- P** PARKING AREA

PERIMETER TRAIL: 2 MILE PAVED LOOP w/ BOARDWALKS & FITNESS STATIONS

INTERIOR TRAILS: CRUSHED STONE

Future Projects:

- 7 HILL TOP SHELTER
- 8 FOREST RIDGE SHELTER
- 9 WOODS EDGE SHELTER
- 10 SCIENCE LAB AT CONSTRUCTED WETLAND
- 11 AMPHITHEATER
- 12 WEDDING GARDEN

- P** PARKING AREA

PICNIC AREAS

INTERIOR TRAILS: CRUSHED STONE



FINANCIAL OVERVIEW

| | |
|----------------------------------|--------------------|
| First Design Quotation | \$8,500,000 |
| <u>Present refined Quotation</u> | <u>\$5,630,700</u> |
| Funding Projection | \$3,373,850 |

Funds requested by the Park Board to CONSERVATIVELY make the Parklands a truly DESTINATION PARK that will be envied by many across the Midwest is approximately (\$3.4 to \$4.0 million dollars).

Parklands + Additional 25.6 Acres

\$5,630,700

Acquisition of 25.6 Acres

- Bicentennial Nature Trust and Charitable Bargain Sale - \$401,850
- Seger Family *Donation for Acquisition* - \$118,850
- Seger Family *Donation for establishing Endowment* - \$100,000
- Indiana Heritage Trust - \$35,000
- Dubois County Community Foundation grant - \$20,000
- Less Grants, Contributions, Landowner Contributions - \$675,700

Parklands (74 Acres) Initial Costs:

\$4,955,000

Parklands (74 Acres) Initial Costs:

\$4,955,000

- Seger Family Donation

- \$781,150

- After acquisition dollars available for improved Parklands experience

Less Lead Gift:

\$4,173,850

- Additional Grant Opportunities

- \$400,000

- Naming Rights Donation Opportunities

- \$400,000

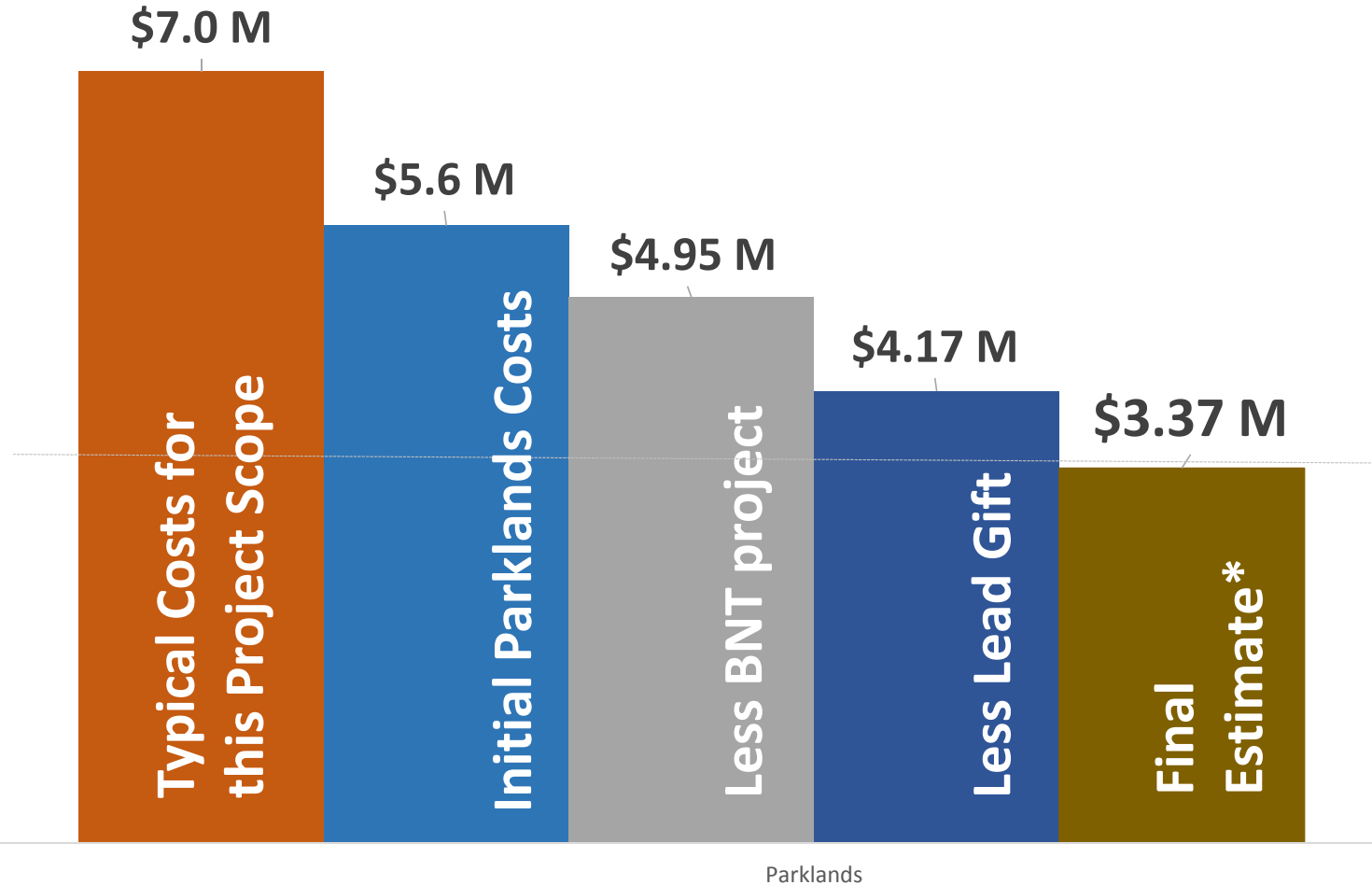
Final Estimated Cost:

*Contingent on grants/donations

\$3,373,850*

(without: \$3.4-\$4.0 M)

Parklands Cost Breakdown



*Contingent on Additional
Grants & Naming Rights Donations

Value Added Public-Private Partnership

- 25.6 wooded acreage perpetually protected in the heart of our City
- 70+ Acre Central Park Experience in the Parklands
- Leverages Grant Opportunities, Philanthropic Support, Partnerships to cut in half the costs of similar projects of this scope
- Once-in-a-lifetime transformation of public space for the benefit of our residents and visitors alike for multiple generations
- Quality of Life and Quality of Place based community progress
- Exemplary vision for the City of Jasper and our Parks and Rec system