

Jasper Arts Center, 951 College Avenue, Jasper, IN 47546
(812) 482-3070, fax 812.634.6997
Doreen Lechner, Facility Manager (dlechner@ci.jasper.in.us)

TECHNICAL INFORMATION SHEET: GENERAL

STAGE DIMENSIONS:

Depth: Plaster line to cyc, 30 ft.; Plaster line to back wall, 39 ft.;
Front edge of stage to Grand Traveler, 5-1/2 ft.

Width: Proscenium width, 40 ft.; Wall to wall 82 ft.;

Wing space: stage left, 15' (obstructed); stage right, 15'
(curtains extend into wings)

Height: DEAD HUNG HOUSE W/ 16' AVERAGE TRIM HEIGHT
Stage floor to I-beams, 25 ft.; Proscenium height: 18 ft.

STAGE ACCESS:

Loading Dock (truck height): w/ dock plate at stage level, 8'x12', internal loading door 7'6"x11'6"
External Sidewalk: connects stage level to FOH level and Dance Studio level

HEADSET SYSTEM:

Clear Com, 7 stations--SL, SR, Technical Balcony, House Center
Bogen intercom--Technical Balcony, Dressing Rooms, Box Office
Paging available into Dressing Rooms & Green Room through sound system

DISCONNECTS:

1- 400 Amp/ 3 Phase Stage power (located upstage right) - in-house lighting system also connected
to this power source

1- 200 Amp/ 3 Phase Stage power (located upstage right)

1- 100 Amp/ 3 Phase Stage power (located upstage right)

1- 60 Amp/ 3 Phase Shoreline power (exterior room near parking)

DRESSING ROOMS: (1/2 LEVEL ABOVE STAGE)

Men's: 5 person, lighted mirrors, running water, restroom facilities & shower
Women's: 6 person, lighted mirrors, running water, restroom facilities & shower (can accommodate
an additional 6 persons with mirrors but no lights)

SUPPORT SPACE:

Green Room: next to dressing rooms, includes workspace and lounge area
Production Office: can be set up in Green Room or in staff office area
Dance Studio: 1/2 level below stage (54'x27') with restrooms, full length mirrors, 2 moveable
dance barres are also available
Vending Machine: soft drink machine located in dance studio (Coke products)

Jasper Arts Center, 951 College Avenue, Jasper, IN 47546
(812) 482-3070, fax 812.634.6997
Doreen Lechner, Facility Manager (dlechner@ci.jasper.in.us)

TECHNICAL INFORMATION SHEET: LIGHTING

ELECTRICS: Maximum trim height 20'

House Beam: 32 circuits (usually use 6x12 or 26° instrumentation)

1st Electric: 24 circuits (flyable to hang); 4' from plaster line

2nd Electric: 24 circuits (flyable to hang); 11' from plaster line

3rd Electric: double pipe, 150 watt striplight (4-color roundels), hard wired & fix focused, ties up 8 circuits, additional 16 circuits above (flyable to hang); strips 18' from plaster line, additional pipe 19' from plaster line

4th Electric (cyc lighting): 300 watt striplight (4-color roundels), deadhung at 18' and hard wired, focused on cyc for full even wash, ties up 12 circuits; 25' from plaster line

Stage pockets - located in 2nd and 3rd wings, 4 circuits in each pocket for a total of 16 circuits; usually need to 2-fer or 3-fer

* strip lights are hardwired and inaccessible, thus eliminating 20 circuits; strips use glass roundels (blue, red, green, amber--clear also available)

DIMMING SYSTEM:

ETC Express 48/96, 2 scene preset, 24 submasters

ETC Sensor dimmer rack, 132 stage dimmers (dimmer per circuit) & 5 house dimmers (controlled w/ stage lighting)

INSTRUMENT INVENTORY:

ETC:

16 26° ETC Source 4 Juniors (use "m" templates)

16 36° ETC Source 4 Juniors (use "m" templates)

5 25°-50° ETC Source 4 Junior Zooms (use "m" templates)

Century:

8 6x16, 750 watt ellipses w/ gobo slot

21 6x12, 750 watt ellipses w/ gobo slot

12 6x9, 750 watt ellipses w/ gobo slot

32 6", 500 watt fresnels

Altman:

12 6x12, 1000 watt Altman axial ellipses w/ gobo slot

4 6x12, 750 watt Altman ellipses w/ adjustable iris

2 6x9, 750 watt Altman ellipses

10 6", 100 watt fresnels

6 ea. PAR 64's, narrow, medium, & wide focus

Other:

6 40° Colortran 575 watt ellipses w/ gobo slot

4 30° Colortran 575 watt ellipses w/ gobo slot

2 Lycian SuperArc 400 followspots (400W HTI lamp)

2 Lycian Midget 2K followspots (2000W BWA lamp)

Jasper Arts Center, 951 College Avenue, Jasper, IN 47546
(812) 482-3070, fax 812.634.6997
Doreen Lechner, Facility Manager (dlechner@ci.jasper.in.us)

TECHNICAL INFORMATION SHEET: SOUND SYSTEM

MIXER

Soundcraft GB8, 32 channel, 8-bus console, located in technical balcony at rear of house

SPEAKERS

- 3 EAW MK-5366 15" speakers (L, C, R) - FOH
- 3 EAW MK-2366 12" speakers (L, C, R) - mid auditorium on delay
- 4 Celestion SR2 1000's in orchestra pit
- 4 Carvin 752 monitors (112HS)
- 2 Grund Audio Design monitors (ST-122M)

MICROPHONES

- 7 Shure SM-58s
- 5 Shure SM-57s
- 4 Shure SM-81s
- 3 Samson S11s
- 1 Audio Technica ATW-R10 Wireless Lavalier
- 1 Shure AXS58D-V Handheld Wireless, Freq. 169.445
- 1 Shure AXS58D-CA Handheld Wireless, Freq. 176.200
- 4 Shure Presenter Series Wireless Lavalieres, Freq. 598.625, 603.900, 615.900, 623.350
- 1 JTS NX2
- 1 JTS NX7
- 3 JTS NX6
- 1 Samson IR-3/SM58 Handheld Wireless
- 3 Audio Technica AT871 Boundary (170° & 100° elements)
- 5 AKGs
- 1 Crate with on/off switch
- 2 Crown PZM-6S
- 2 Crown PZM-LV (lavalier)

EQUIPMENT

Double Auto Reverse Cassette Tape Deck
Dual CD Deck
Reel-to-Reel Tape Deck
Portable MiniDisc Player

BACKSTAGE/PORTABLE SYSTEM FOR SCHOOLS

Yamaha EMX5014C powered mixer (10 channels, 14 inputs, 2 powered outputs)
Crate PX-600DP powered mixer (6 mic channels, 2 powered outputs)
Grund Audio Design monitors used for Mains
Carvin 752 Monitors

Jasper Arts Center, 951 College Avenue, Jasper, IN 47546
(812) 482-3070, fax 812.634.6997
Doreen Lechner, Facility Manager (dlechner@ci.jasper.in.us)

TECHNICAL INFORMATION SHEET: LOCAL SERVICES

Motels - in order of proximity to Jasper Arts Center

- | | |
|--|--|
| (1) Hampton Inn
335 3rd Ave.
Jasper, IN 47546
812/481-1811 | (4) Jasper Inn & Convention Center
951 Wernsing Rd
(off Hwy 231 S)
Jasper, IN 47546
812/482-5555 |
| (2) Days Inn
272 Brucke Strasse
(Junction of Hwys 162 & 164)
Jasper, IN 47546
812/482-6000 | (4) Holiday Inn Express
2000 Hospitality Drive
(off Hwy 231 S)
Jasper, IN 47546
812/482-3344 |
| (3) Sleep Inn
75 Indiana (off Hwy 231 S)
Jasper, IN 47546
812/481-2008 | |

Emergency Medical Facilities

Medical of Dubois
3rd Ave. at Rumbach Ave.

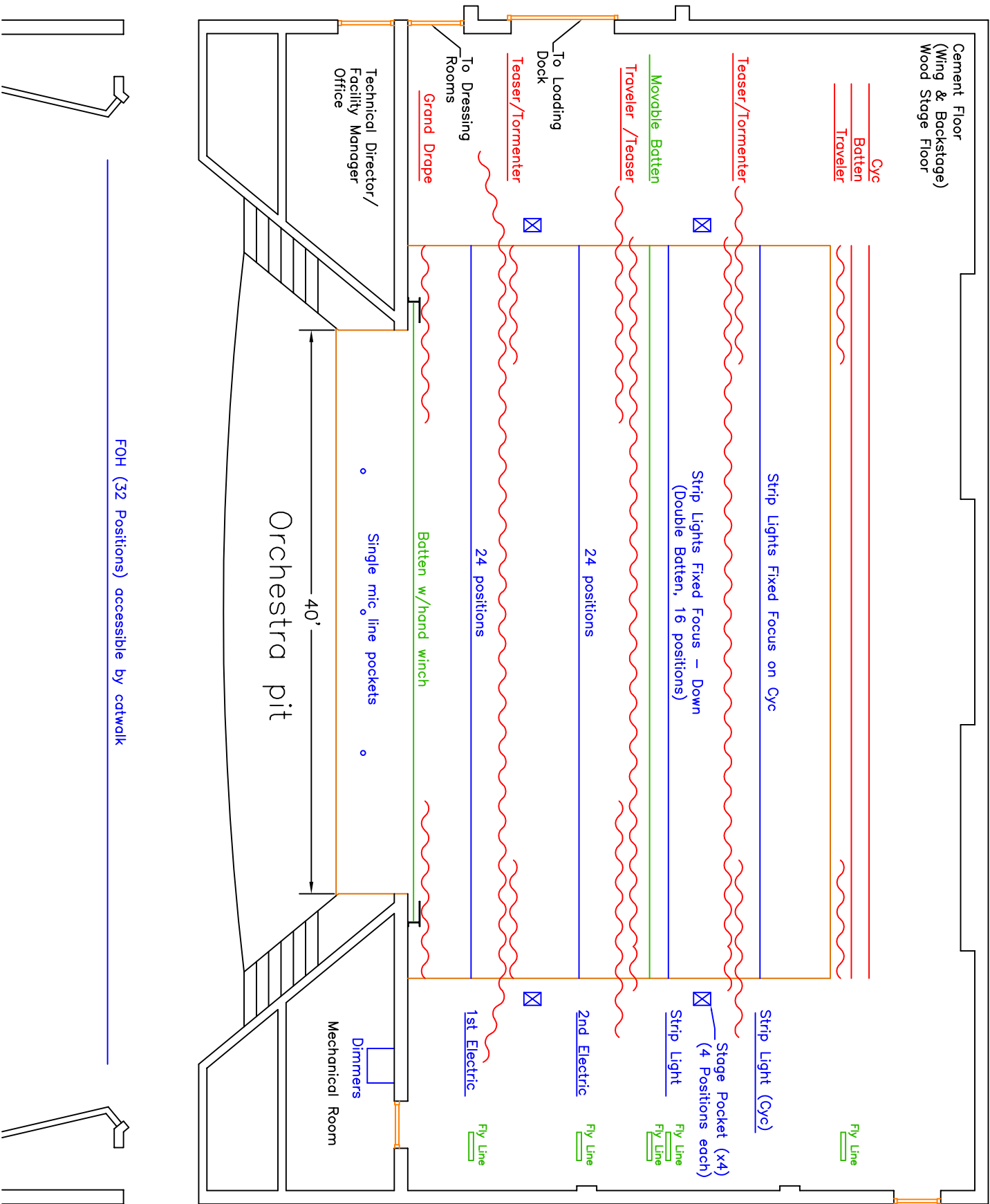
Memorial Hospital & Health Care Center
800 West 9th

Craft & Fabric Stores - in proximity to Jasper Arts Center

Ben Franklin 2905 Newton (Hwy 231 N)	Wal-Mart 3875 Newton (Hwy 231 N)
--	--

Building Supplies - in proximity to Jasper Arts Center

(1) Rural King 1920 Lube Way (off Hwy 231 S)	(2) Krempp Lumber 216 Main Street (downtown)
--	--



Cement Floor
(Wing & Backstage)
Wood Stage Floor

Eye
Batten
Traveler

Teaser/Tormenter

Traveler /Teaser

Teaser/Tormenter

Grand Drape

To Dressing
Rooms

To Loading
Dock

Technical Director/
Facility Manager
Office

Orchestra pit

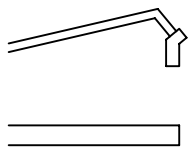
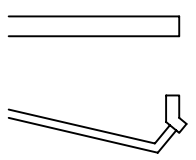
5'

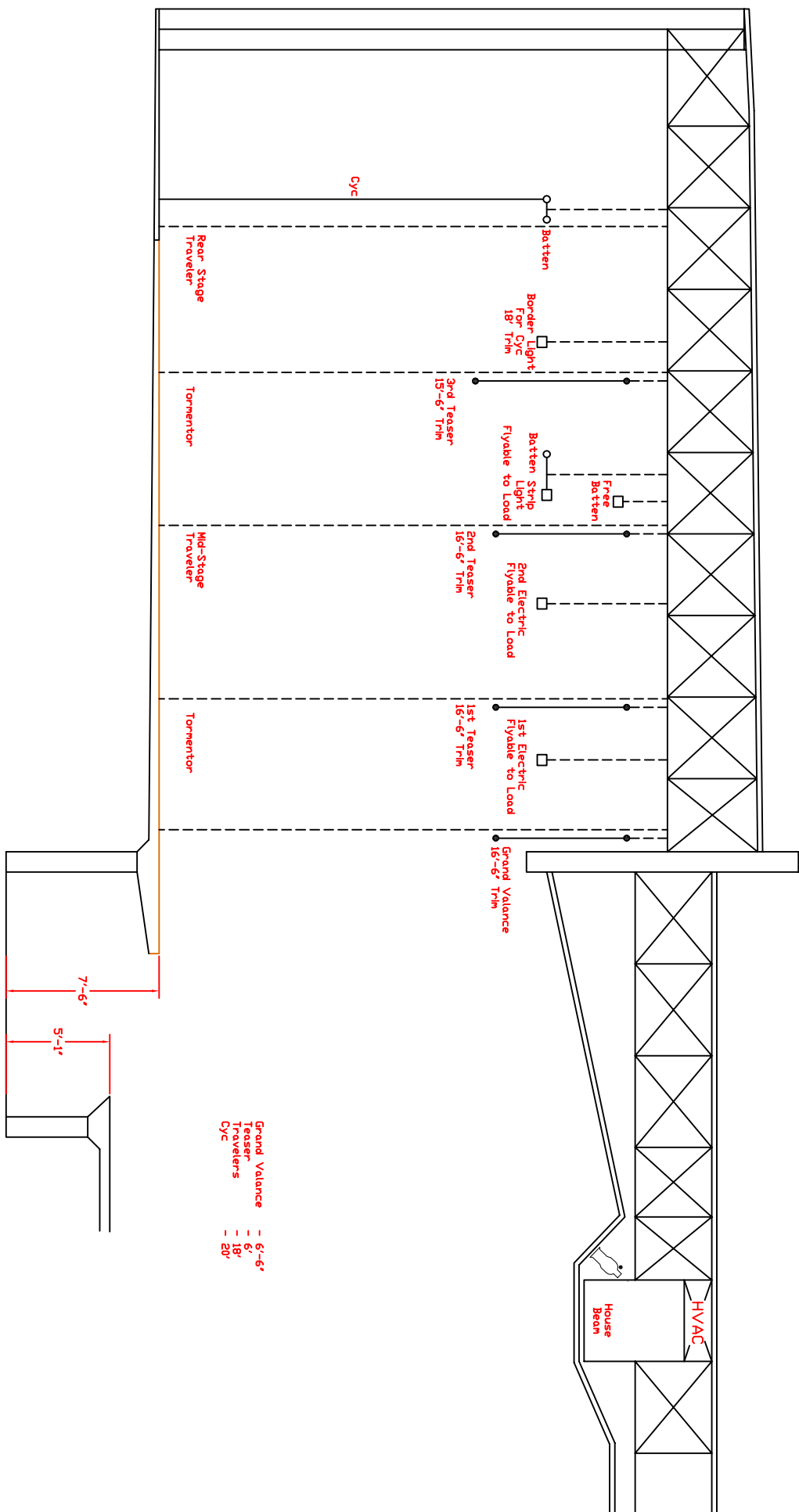
40'

52'

30'

Mechanical Room





- Grand Valance - 6'-6"
- Teaser - 6'
- Travelers - 18'
- Cyclic - 20'