



JASPER COUNTRY CLUB

December 4, 2013

Advisory Committee Meeting 5



1. OVERHAUL

Craig Ranch Regional Park, Las Vegas NV

2. PARTIAL DECOMMISSION

Glen Miller Links, Richmond, IN

3. LIGHT TOUCH

Oak Ridge Park, Clark Union County, NJ

4. ECO-RECREATION

5. URBAN WILD

Conneaut Shores Golf Club, Conneaut OH

1 publicly accessible and open year-round;



2

A contiguous landscape with a wide range of **passive programming** opportunities;



3

A network of
**recreation and
fitness trails** for all
ages and physical
abilities;



“It was so enjoyable and a fantastic workout. Each station had a short explanation and listed the level of fitness, along with two choices of endurance. The stations were not extravagant. They were simply made but very effective for a complete body workout. We were very impressed and mentioned every day that we wish we had a trail like this in Jasper. (Riverwalk or Country Club golf course would be perfect.) - Toni Messmer



4



A learning laboratory that educates people about ecological systems through an understanding of the site's natural characteristics and its eventual transformation;

5

Able to accommodate facilities that advance **environmental stewardship;**



Bernheim
ARBORETUM AND RESEARCH FOREST



connecting people with nature

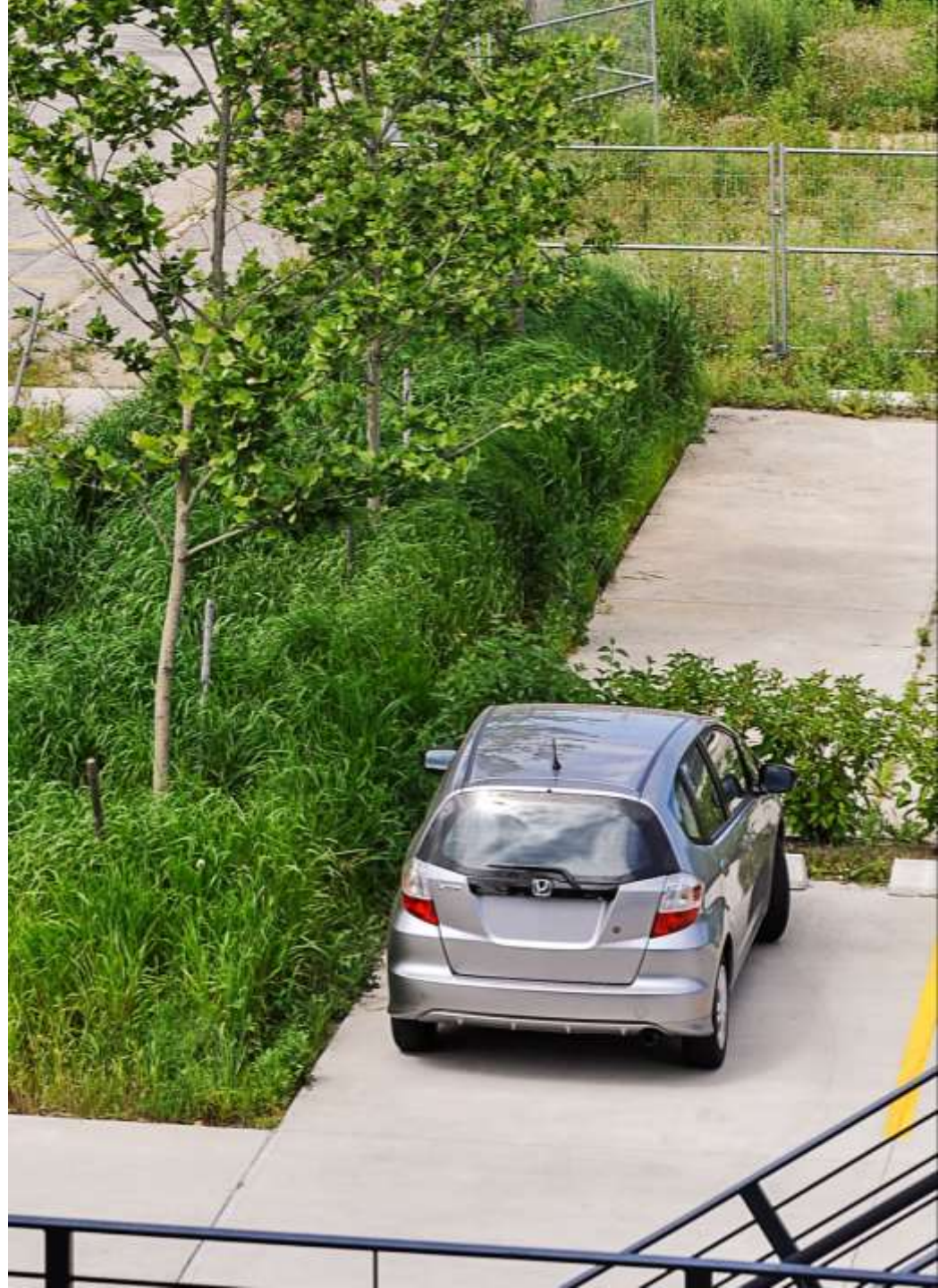
6

A place that **enhances the creative spirit** and provides opportunities for artistic endeavors in harmony with a beautiful natural setting.



7

Easily accessible
with a series of
small, **distributed**
parking areas;



8



An asset to the neighbors that border it;

9

A unique destination - unlike any other in the City - but an **integral and well-connected part of the city's park system;**



10

A place of beauty and **civic pride** with photo-ops (weddings, prom, etc.) and small public gathering /performance spaces;



11

Easy to maintain with a **managed-meadows** approach;



Implemented in a manner that
allows **flexibility and change**;

12



13



Respectful of the **character and cohesion** of a large landscape space while still accommodating some uses that activate the property.



TRAILS

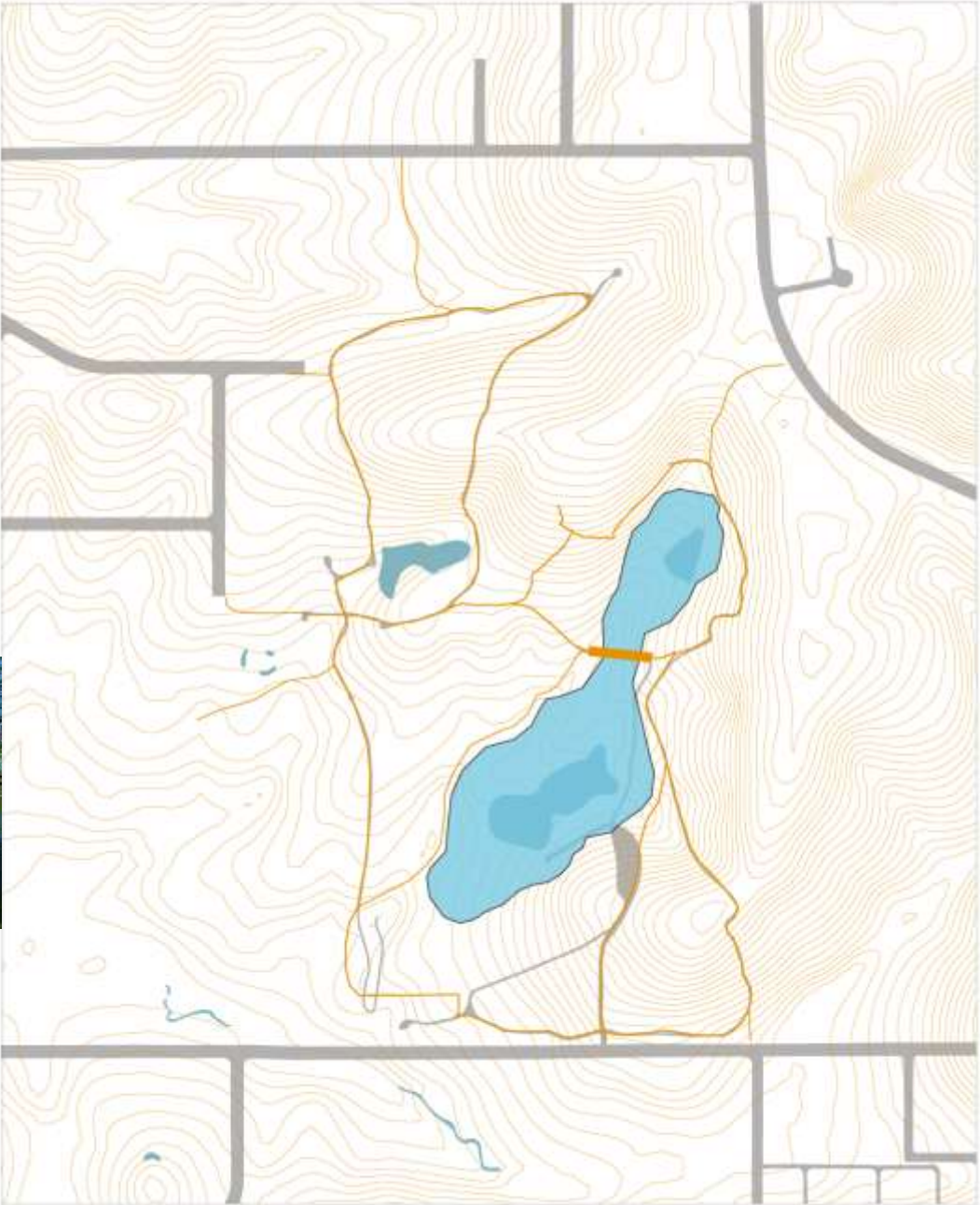
Network of recreational trails that build on the existing cart path.



Source:
Landscape: US National Survey 2019
Map: Google and BingMap, 2019 or later

GREAT POND + BRIDGE

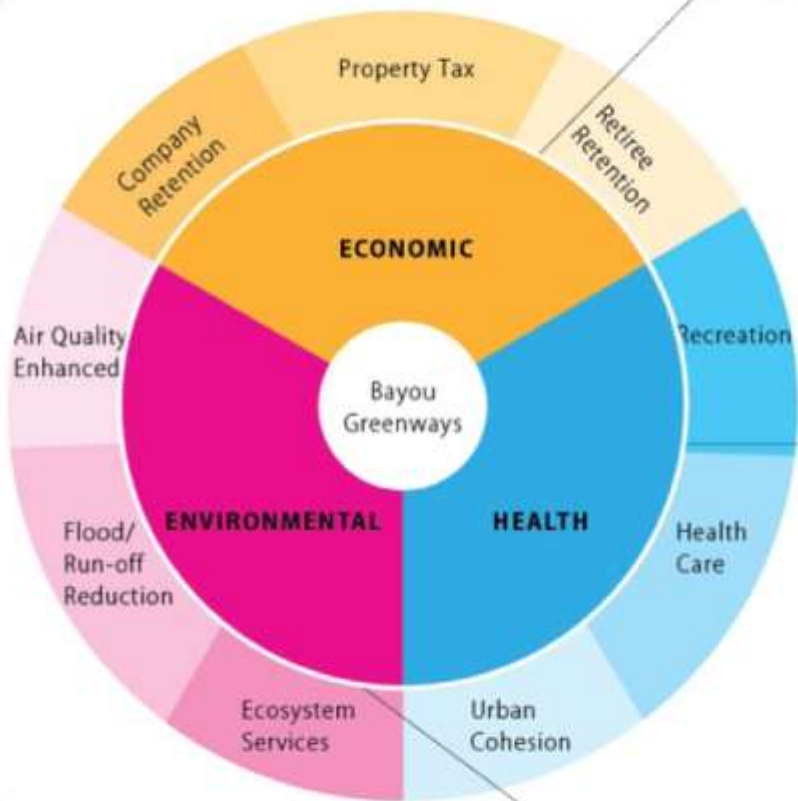
An expansion of the ponds as water retention area and public amenity.





Three lakes become 1 (one goes away).

**BENEFIT ANALYSIS // 11 BAYOU GREENWAYS
OVER A 30 YEAR PERIOD**



ADDED REVENUE

17 million



FACTORS

ECONOMIC

- Retiree Retention
- Enhanced Property Tax
- Company & Talent Retention



77 million



HEALTH

- Urban Cohesion
- Health Care Cost
- Recreational Use



22 million



ENVIRONMENTAL

- Air Quality & Bicycle Use
- Flood/Run-off Reduction
- Ecosystem Services



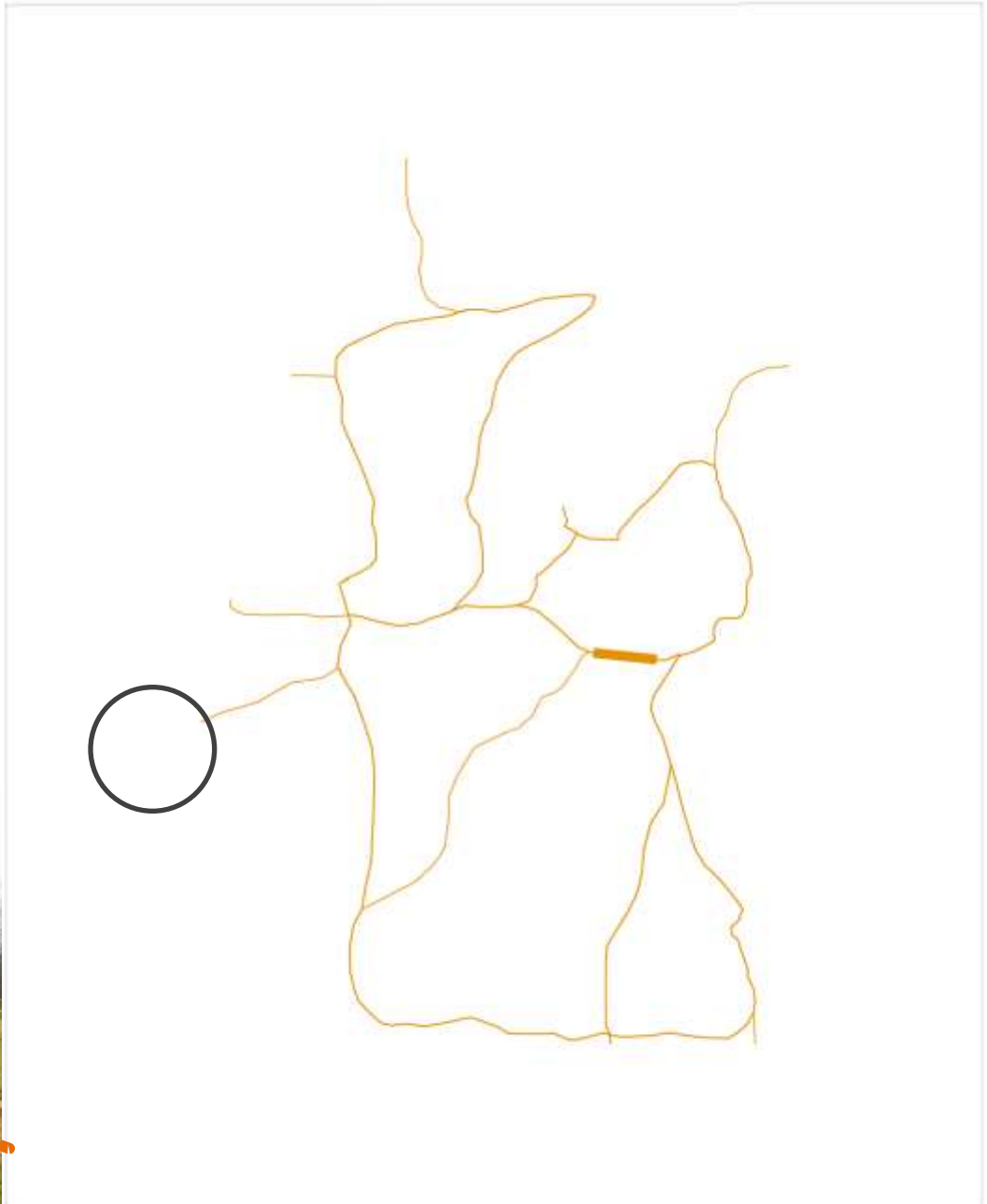
Parks are catalysts for economic and environmental return.

TRAILS

Network of recreational trails that build on the existing cart path.

SOFTBALL
FIELDHOUSE

Pedestrian
access



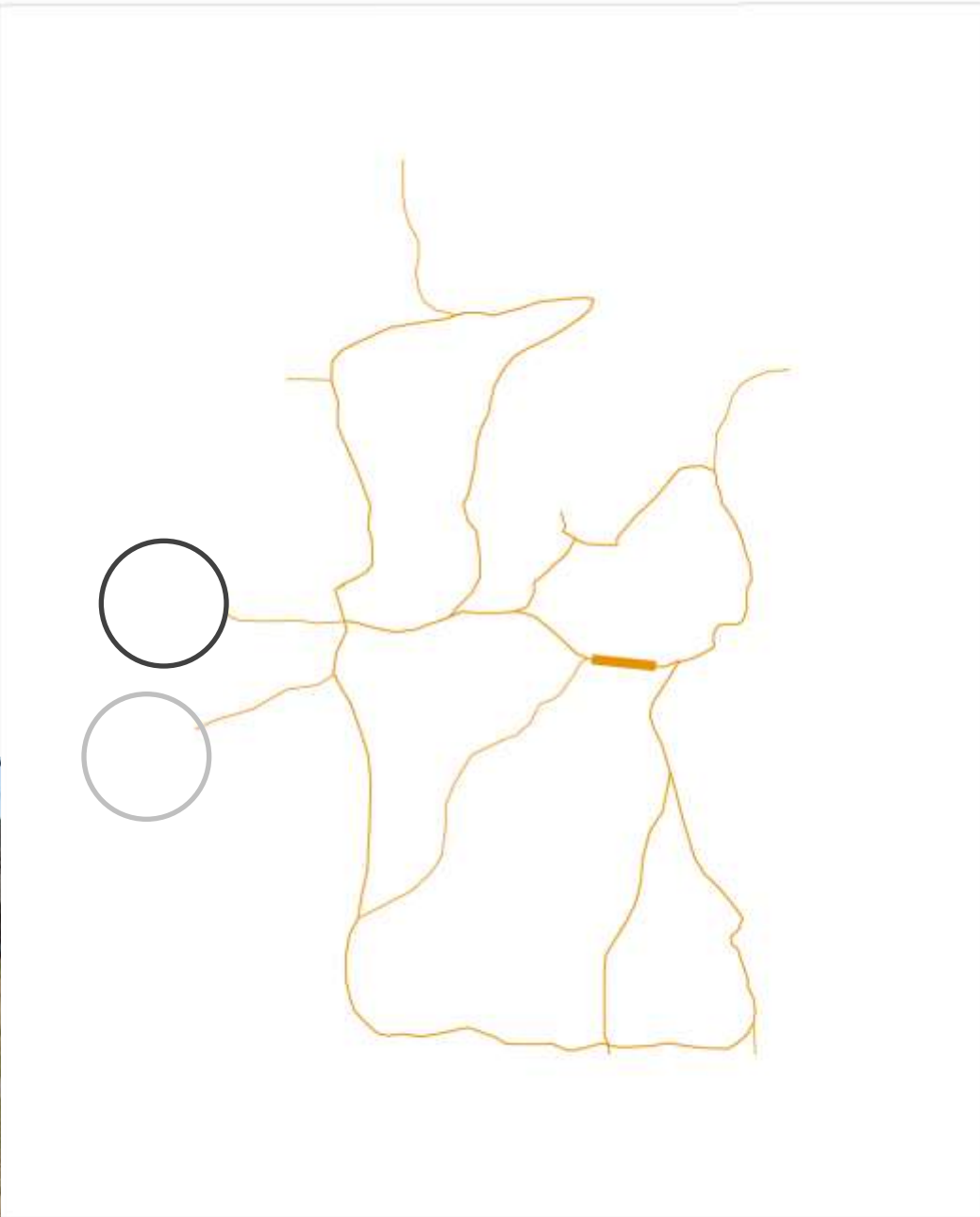
Source:
Indiana SR Geospatial Survey 2019
North English and Indiana: 100' of State

TRAILS

Network of recreational trails that build on the existing cart path.

EMILY STREET

Pedestrian access



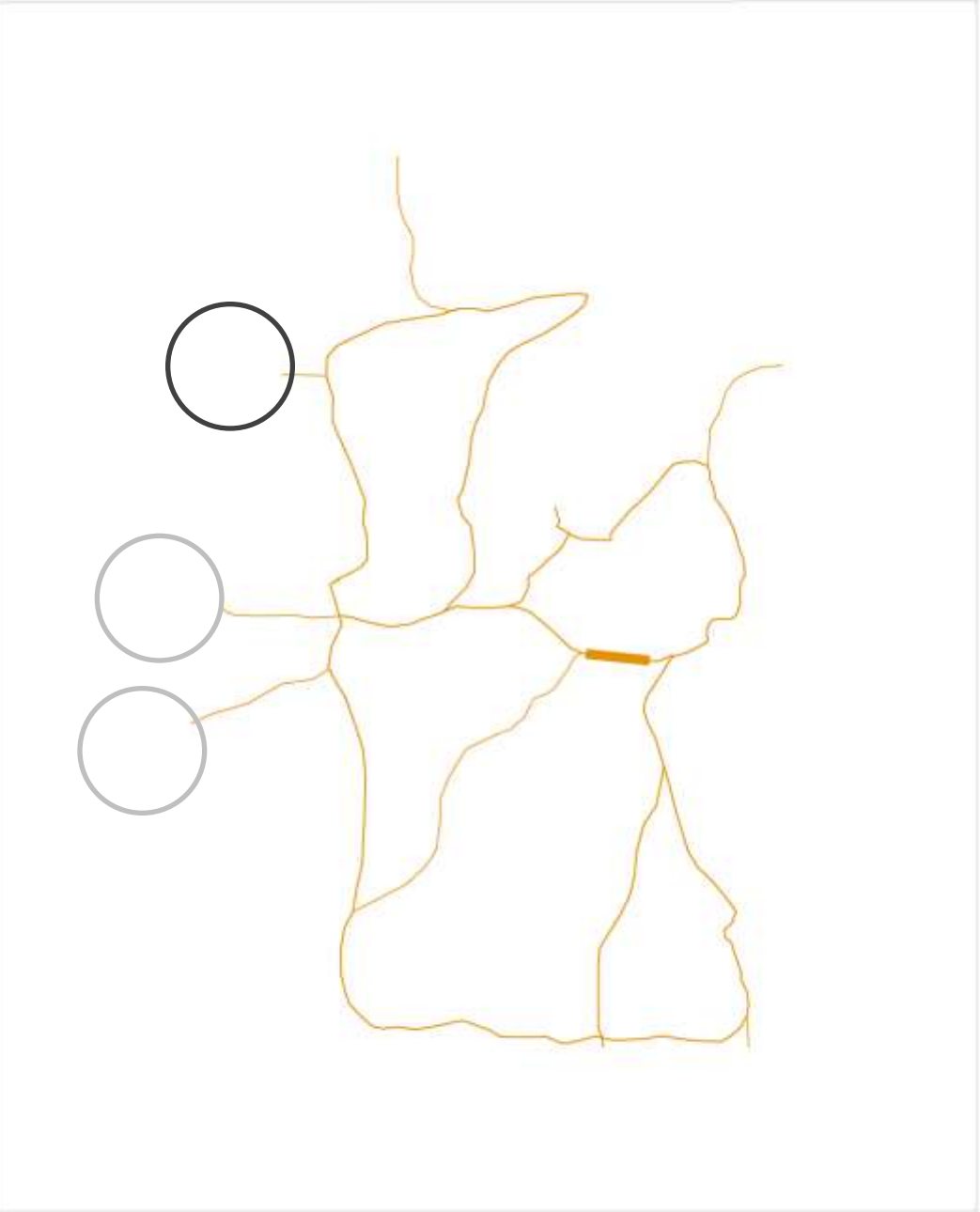
Source:
Oakland: SF Regional Survey 2019
West Region and Oakland: SF of Maps

TRAILS

Network of recreational trails that build on the existing cart path.

W. POPLAR LANE

Pedestrian access



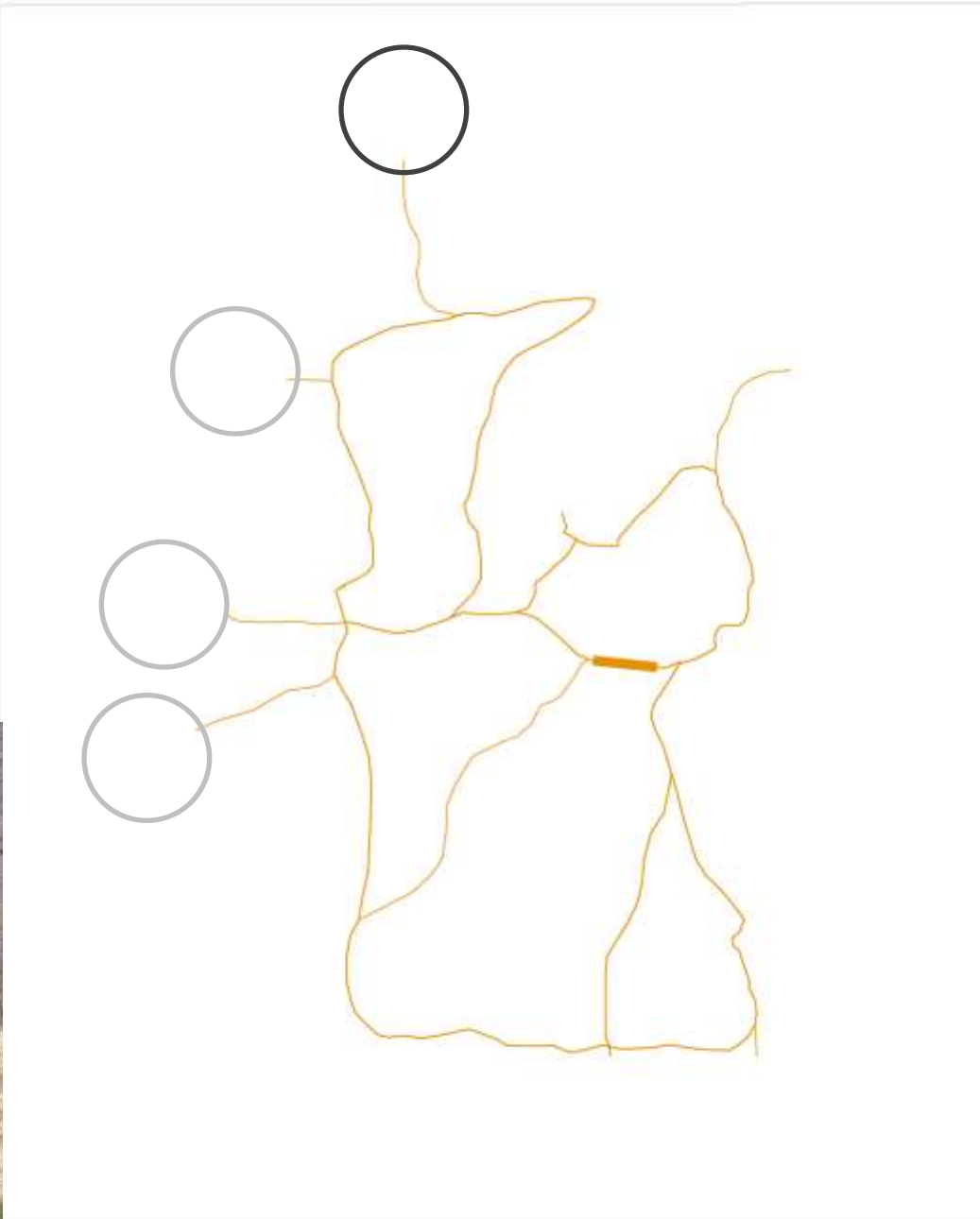
Source:
Indiana State Planning Survey, 1919
Revised by the Indiana State Planning Survey, 1919

TRAILS

Network of recreational trails that build on the existing cart path.

SCHUETTER ROAD

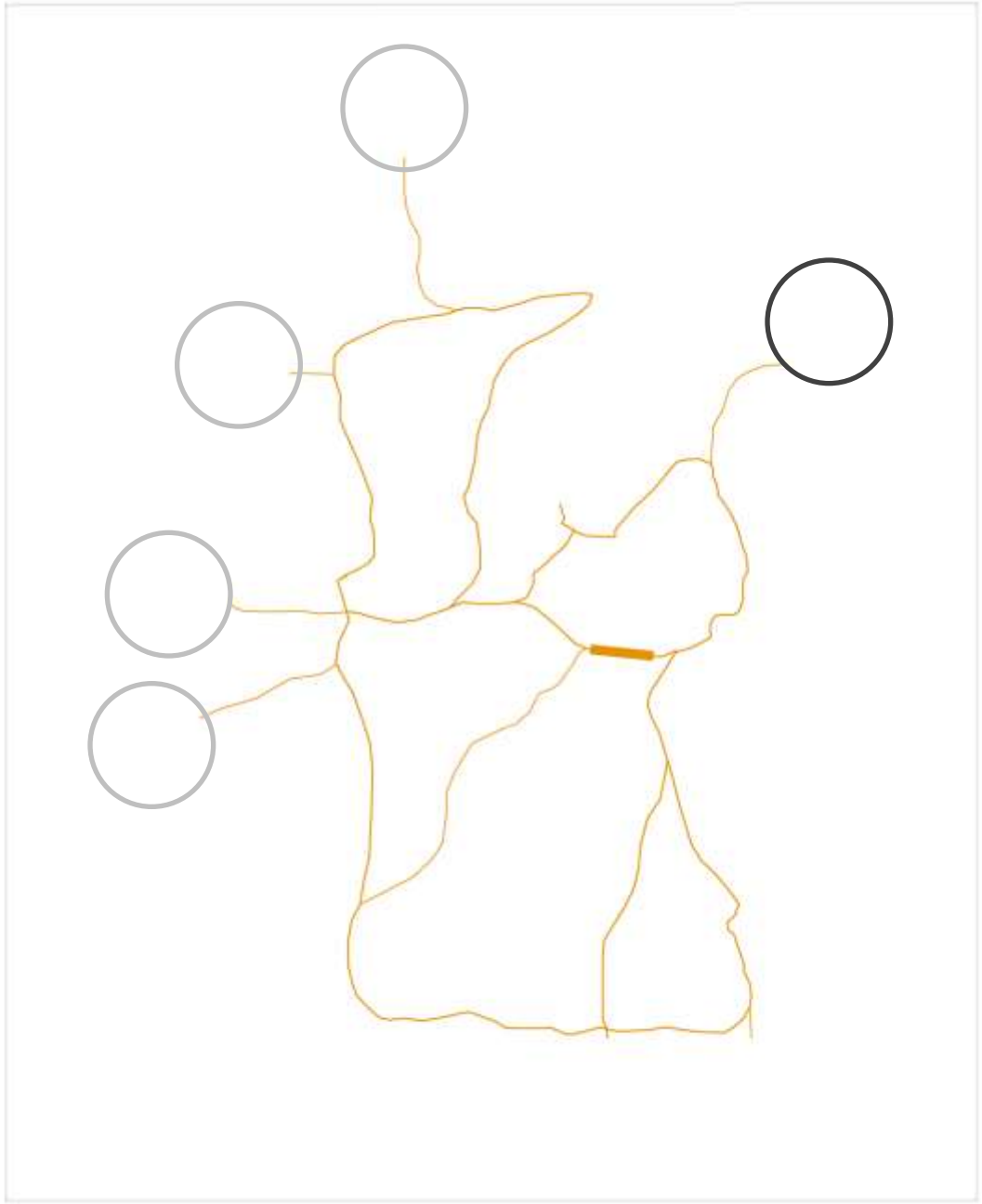
Pedestrian access



Source:
Indiana State Parks Department, 2019
Map by Esri and Esri.com, 2019

TRAILS

Network of recreational trails that build on the existing cart path.



KLUBHAUS 61

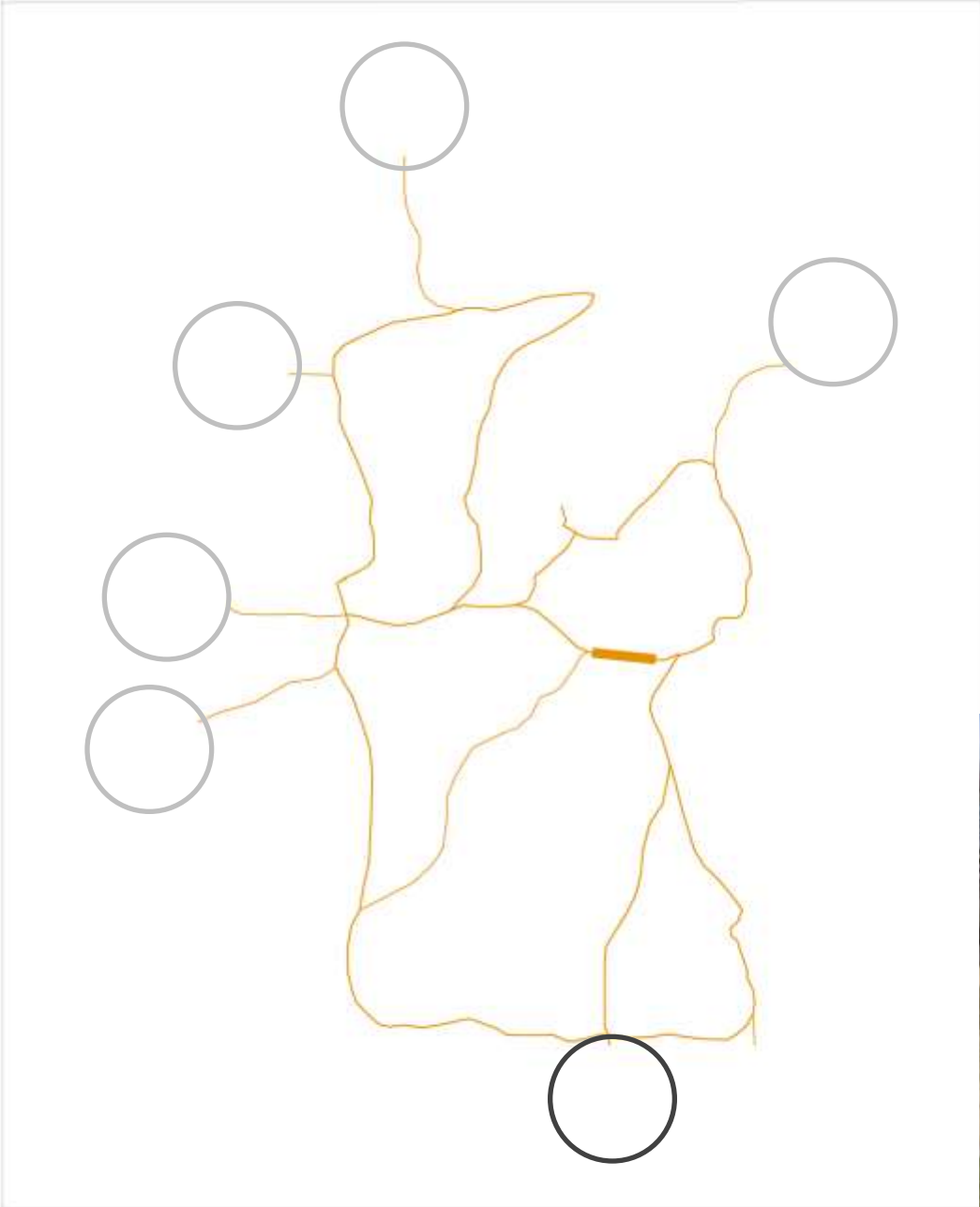
Pedestrian access



Source:
Statistik der Bevölkerung 2019
West-Eigen und Statistik: 100 Jahre

TRAILS

Network of recreational trails that build on the existing cart path.

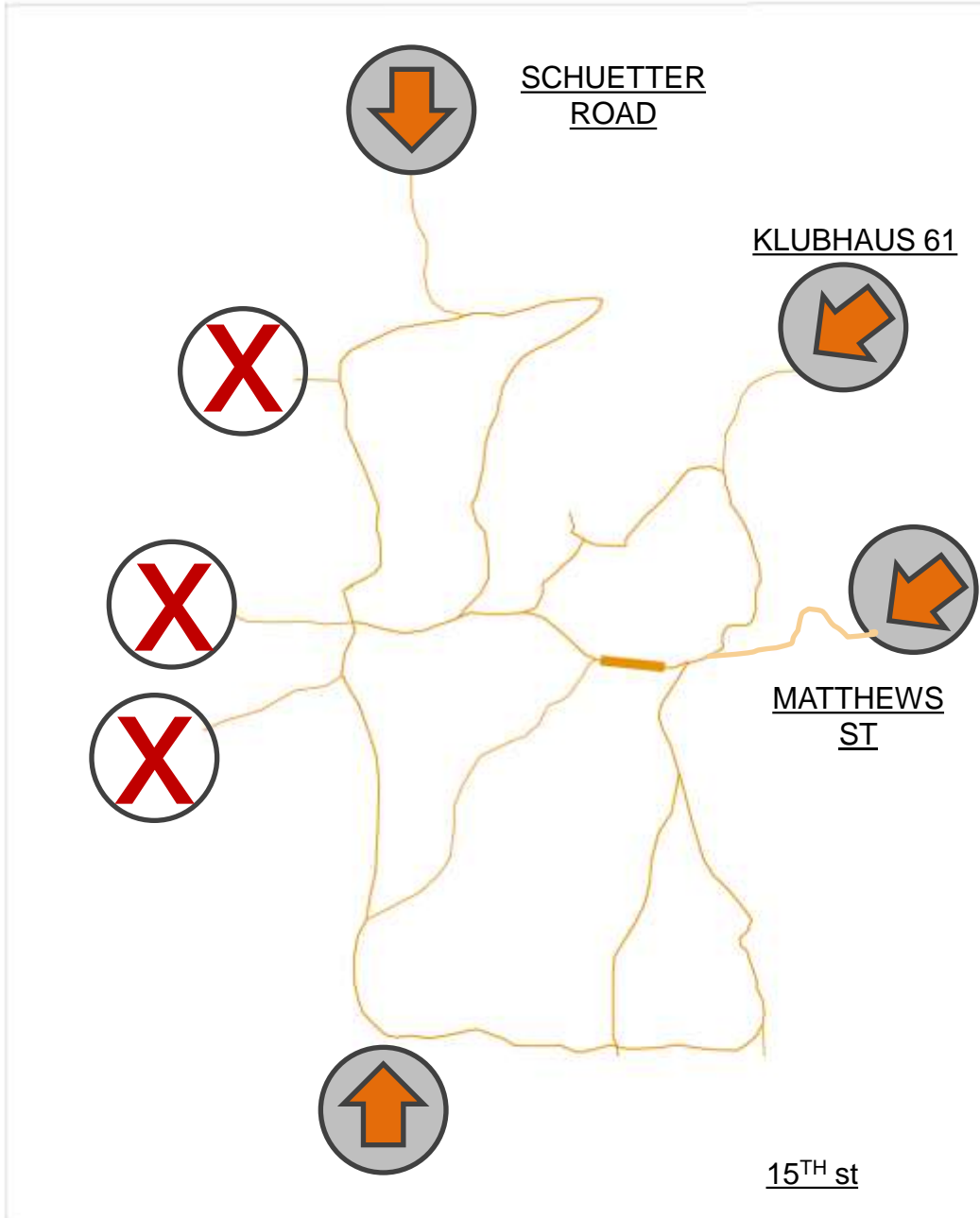


15th STREET



CAR ACCESS + PARKING

A series of smaller lots dispersed in the landscape and accessible from different directions.



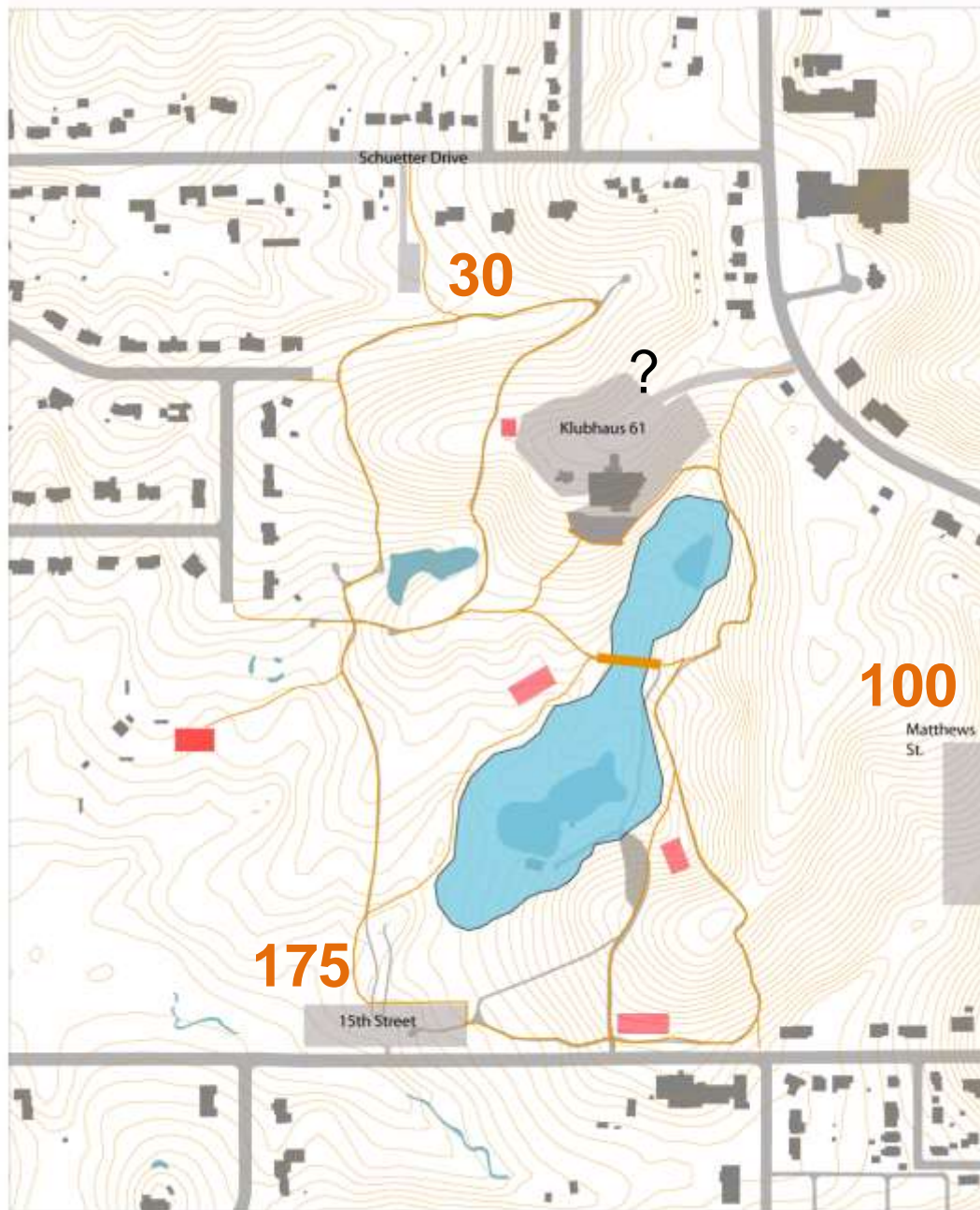
Matthews Street



CAR ACCESS + PARKING

A series of
smaller lots
dispersed in
the landscape
and accessible
from different
directions

+/- 300
spaces



PAVILLIONS IN THE PARK

Program distributed around the site in the form of small pavillions integrated into the landscape.

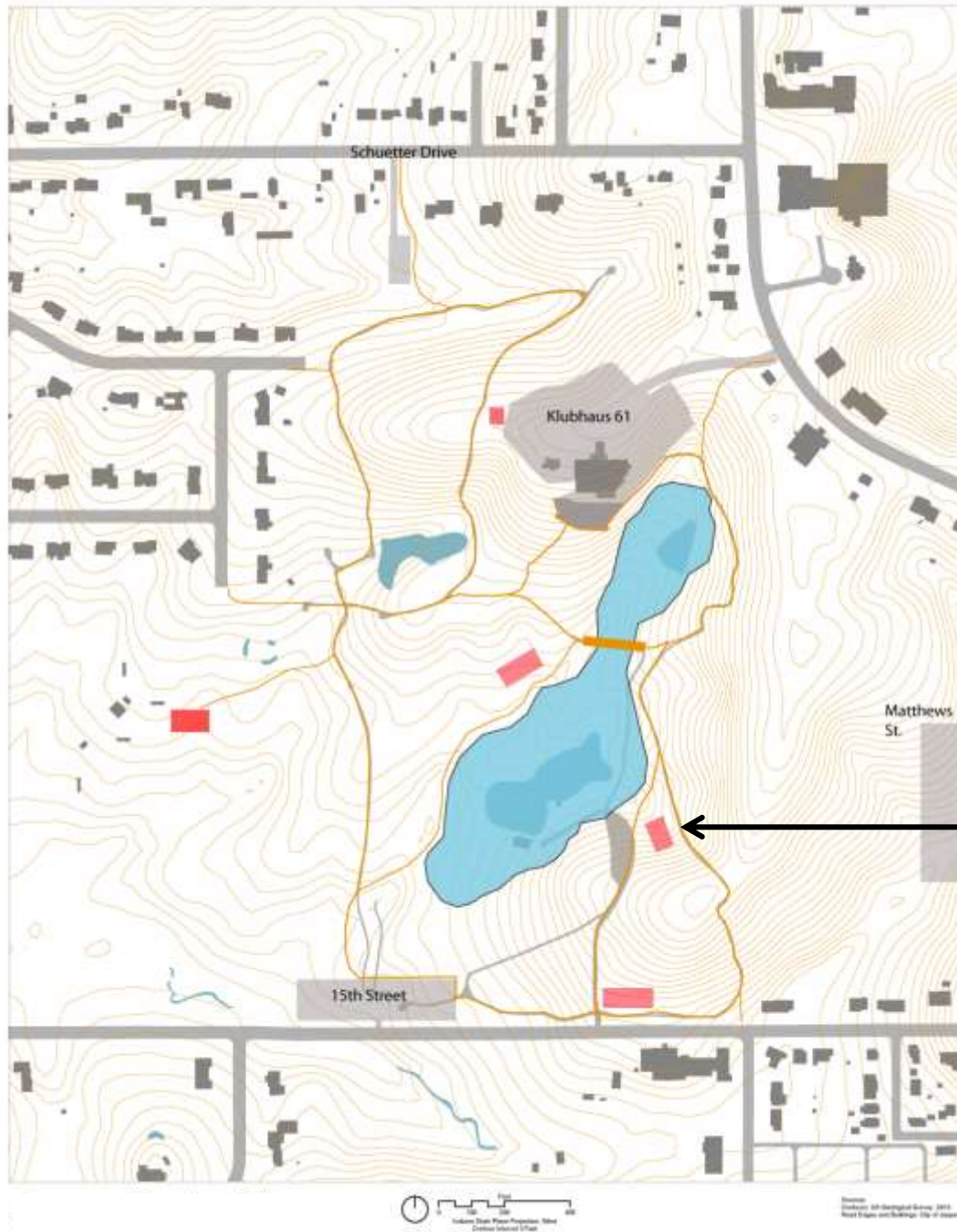


RESTROOMS +
CONCESSIONS



PAVILLIONS IN THE PARK

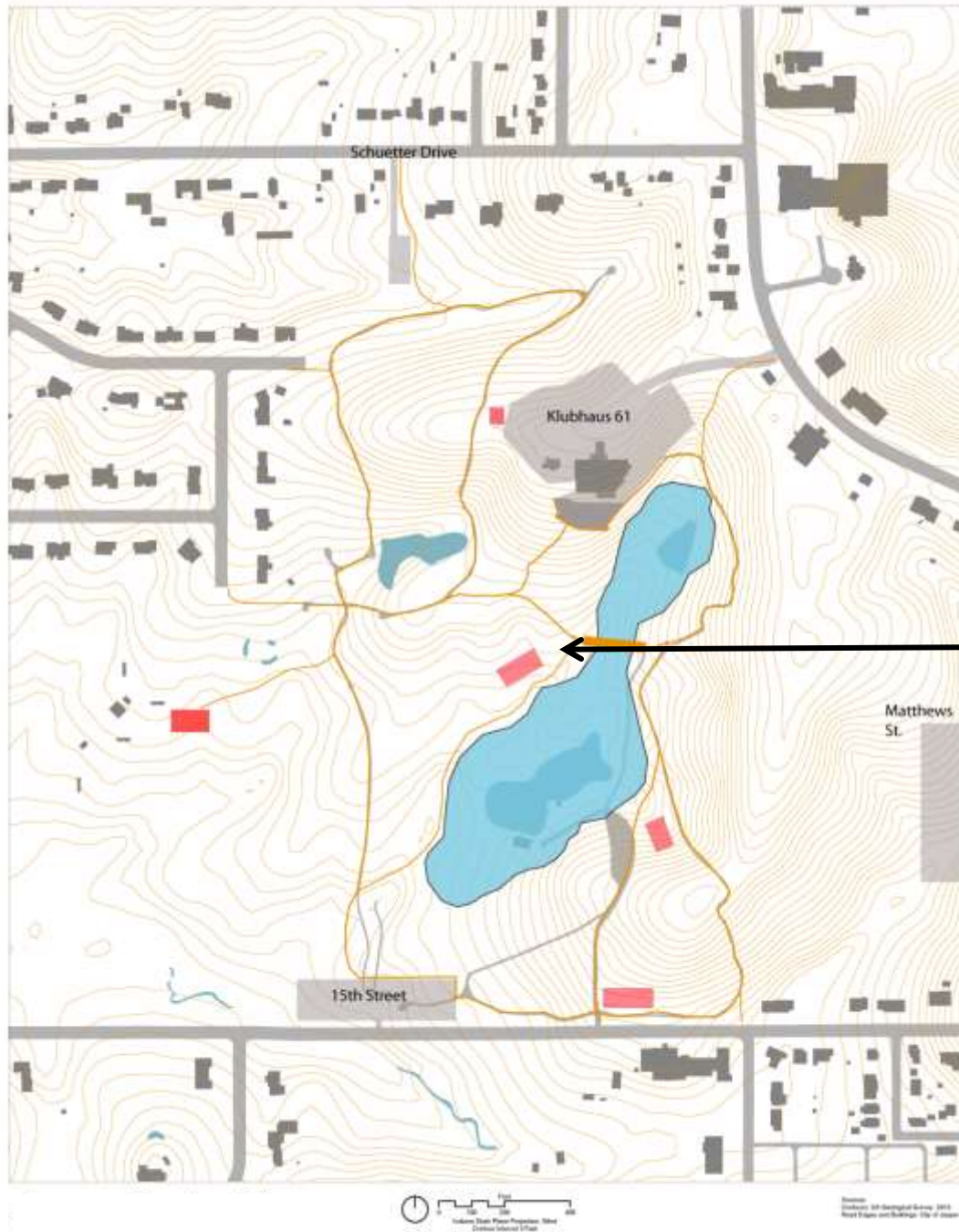
Program distributed around the site in the form of small pavillions integrated into the landscape.



STORAGE /
MAINTENANCE

PAVILLIONS IN THE PARK

Program distributed around the site in the form of small pavillions integrated into the landscape.

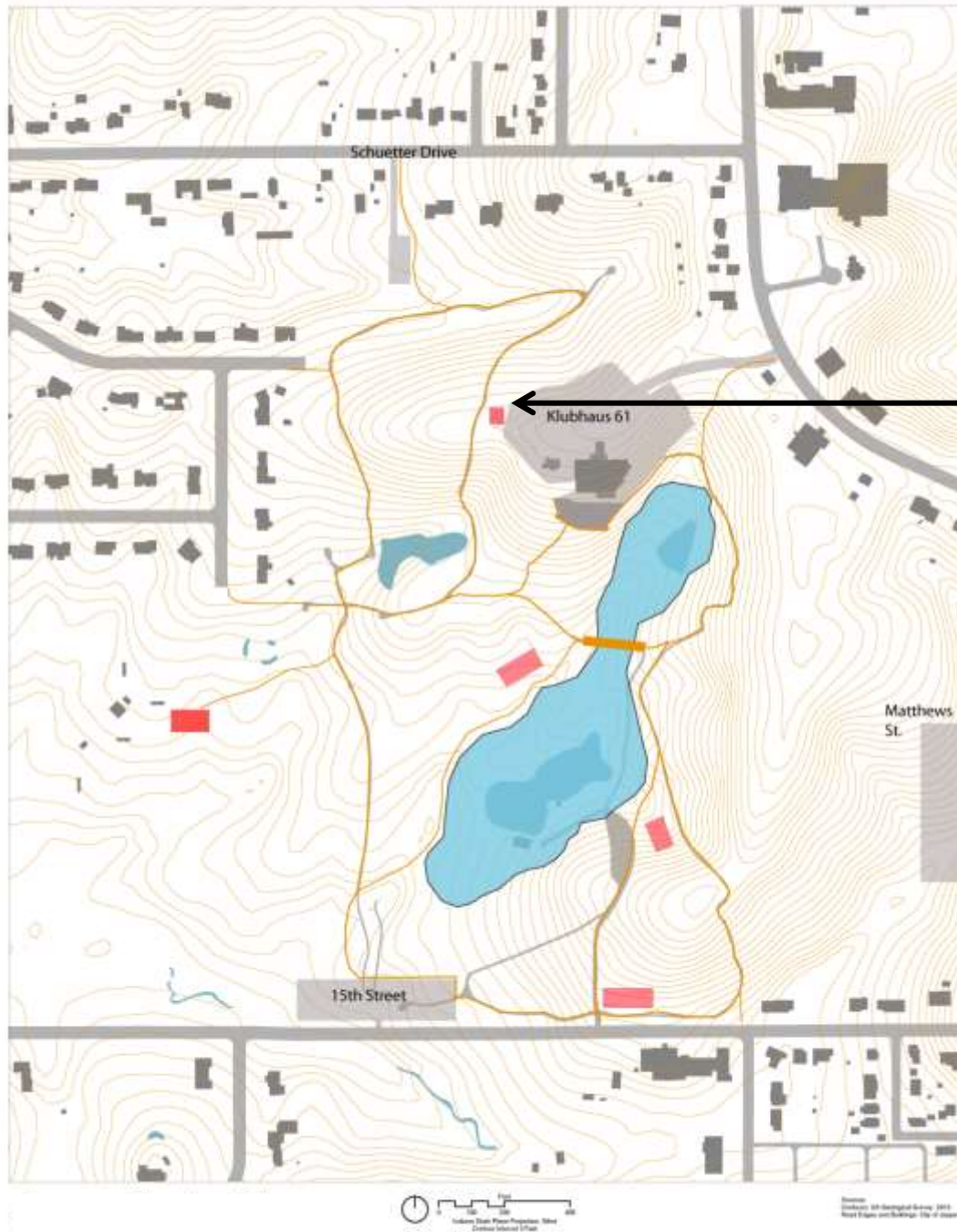


NATURE /
EDUCATION
CENTER



PAVILLIONS IN THE PARK

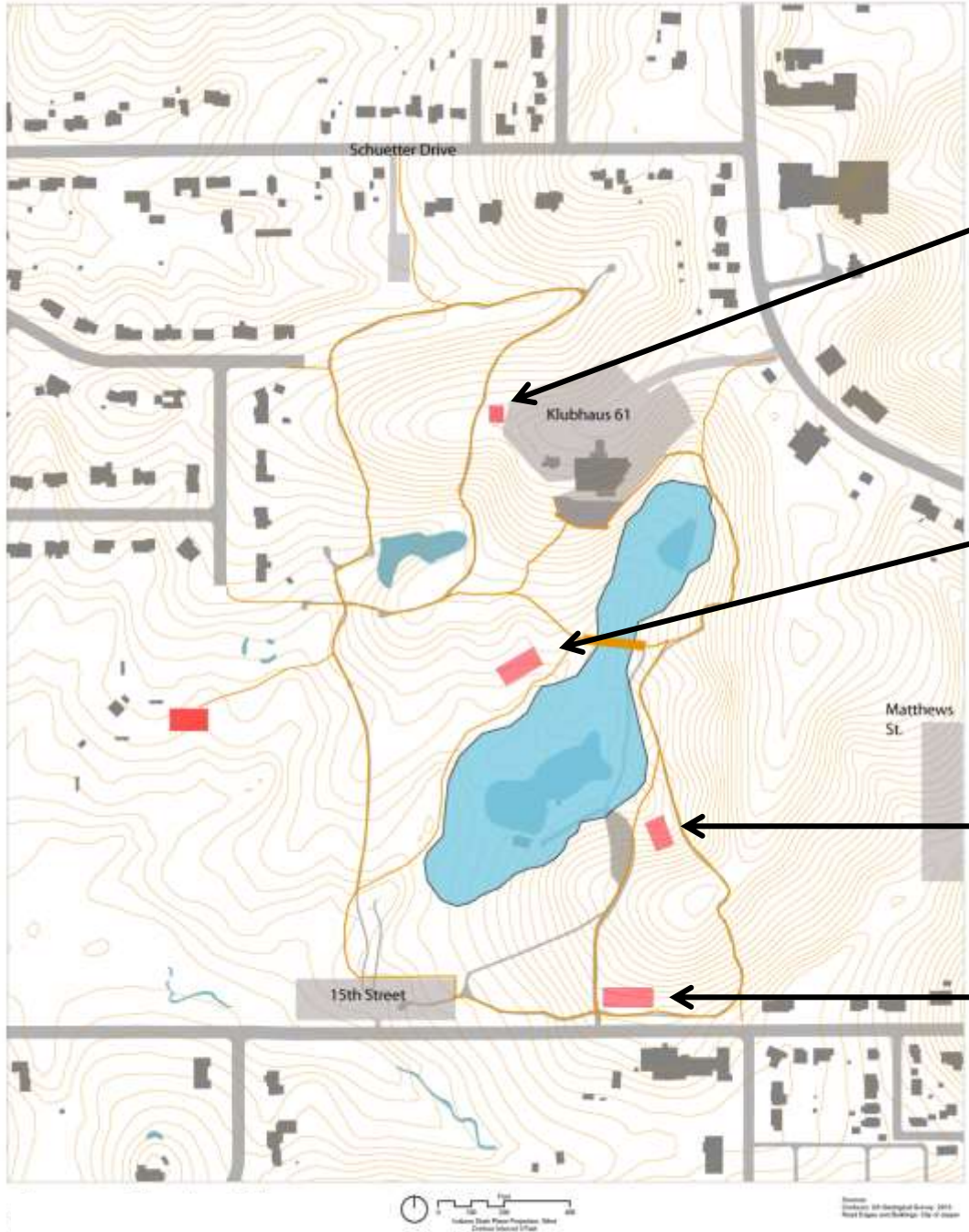
Program distributed around the site in the form of small pavillions integrated into the landscape.



Small OUTDOOR
AMPITHEATER
OR
PERFORMANCE
VENUE

PAVILLIONS IN THE PARK

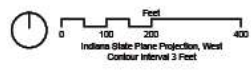
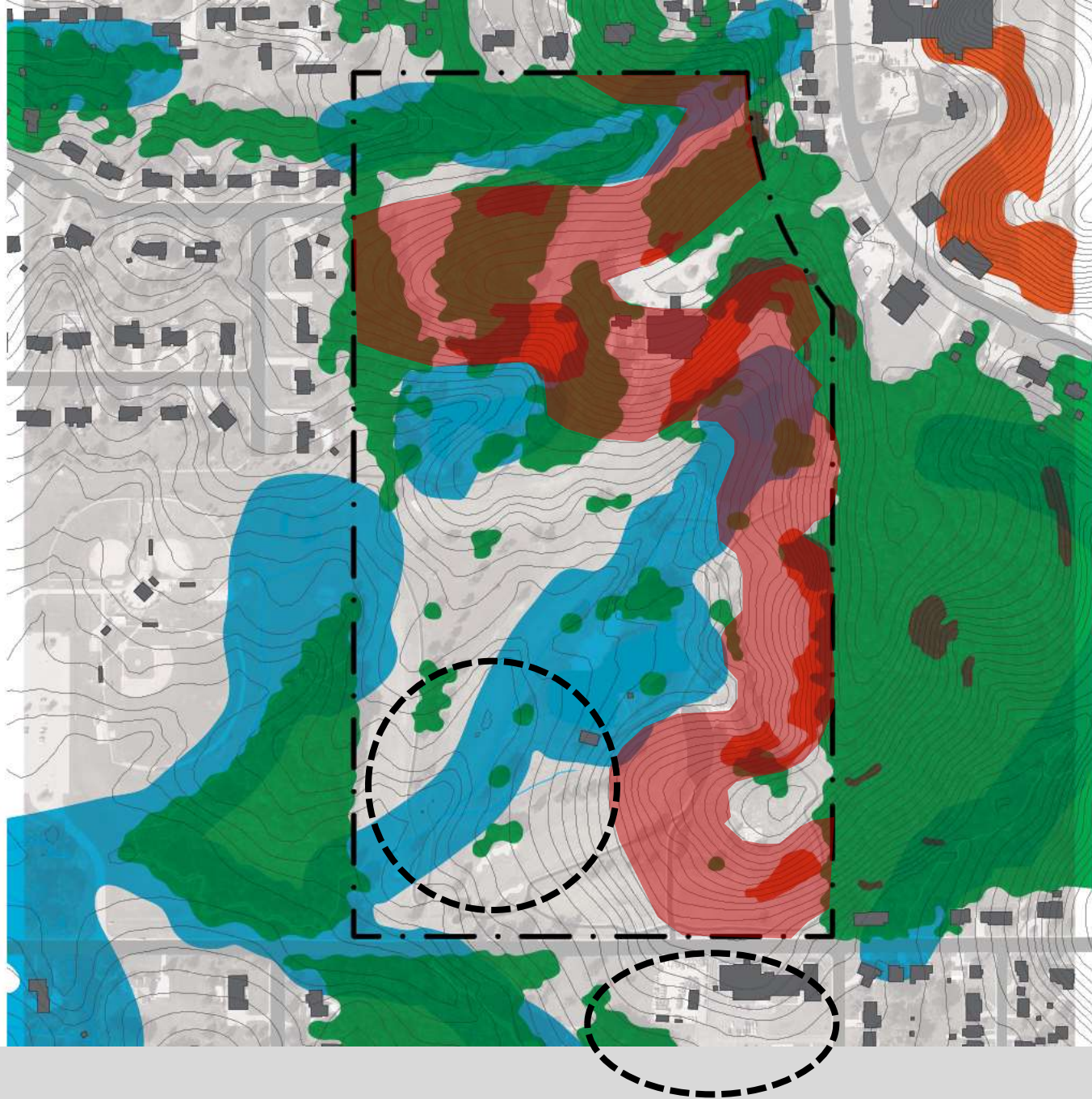
Program distributed around the site in the form of small pavillions integrated into the landscape.



PREFERRED PLAN



Source:
© 2014
© 2014
© 2014



Most developable areas

POTENTIAL PROGRAMS

- Nature trails, bike paths
- “Managed meadows”
- Community Arts and Environmental programs (outdoor)
- Expansion of Lakes: fishing, lakeside paths and seating areas, small picnic areas
- Safe pedestrian connection across 15th Street
- Primary access and parking from 15th Street. Additional access desirable from Newton Road and Scheutter Road.
- “Community Center” (program-related)

